

THIS DOCUMENT IS THE PROPERTY OF DENNIS J. DUBEY, ARCHITECT AND IS NOT TO BE REPRODUCED OR TRANSMITTED IN ANY FORM OR BY ANY MEANS, ELECTRONIC OR MECHANICAL, INCLUDING PHOTOCOPYING, RECORDING, OR BY ANY INFORMATION STORAGE AND RETRIEVAL SYSTEM. WITHOUT THE WRITTEN PERMISSION OF DENNIS J. DUBEY, ARCHITECT, THIS DOCUMENT IS NOT TO BE REPRODUCED OR TRANSMITTED IN ANY FORM OR BY ANY MEANS, ELECTRONIC OR MECHANICAL, INCLUDING PHOTOCOPYING, RECORDING, OR BY ANY INFORMATION STORAGE AND RETRIEVAL SYSTEM.

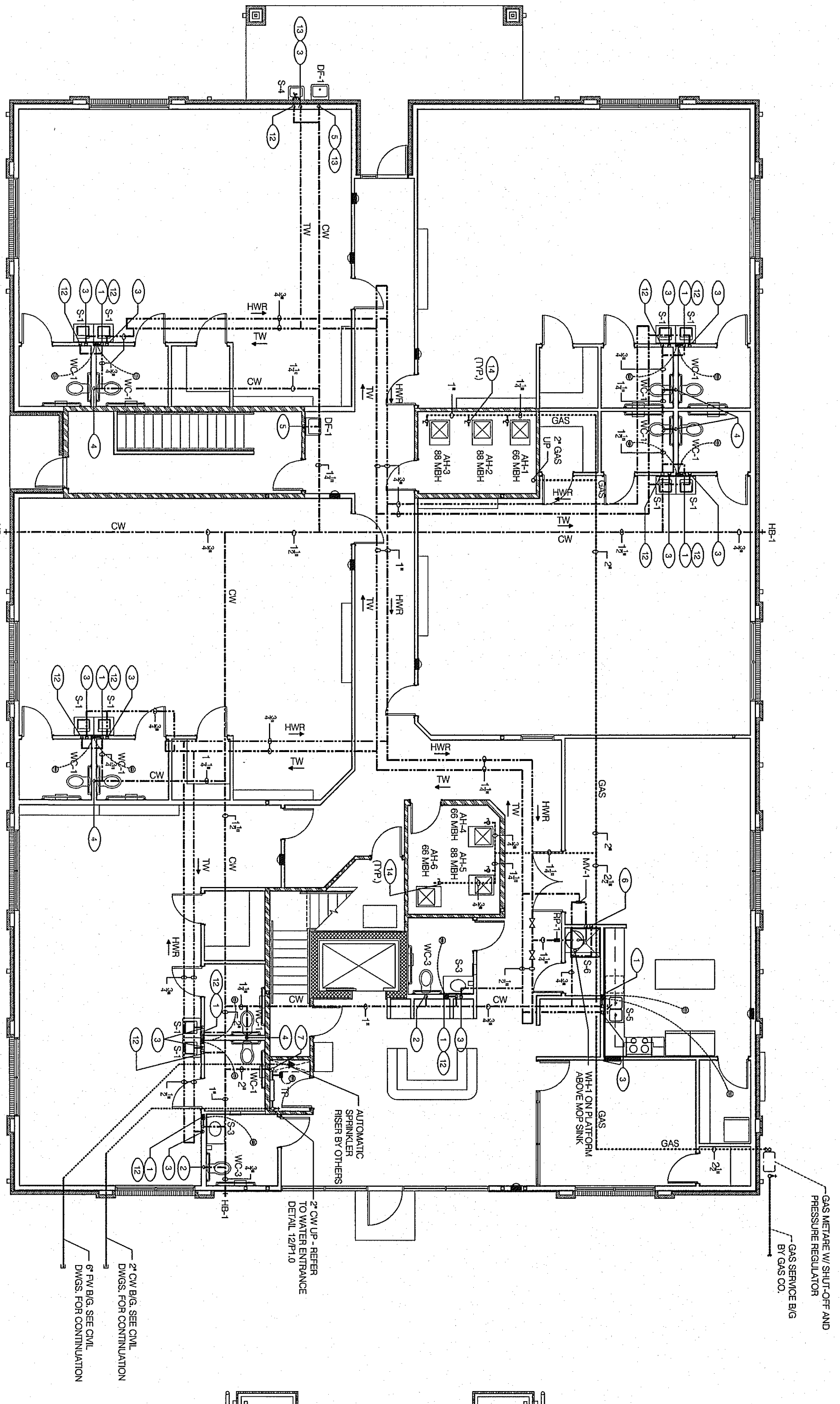
NOT RELEASED FOR CONSTRUCTION
 PROFESSIONAL SEAL

PROJECT LOCATION
 3994 OLD ATLANTA ROAD
 CLAINBORO, GA 30441



REVISIONS

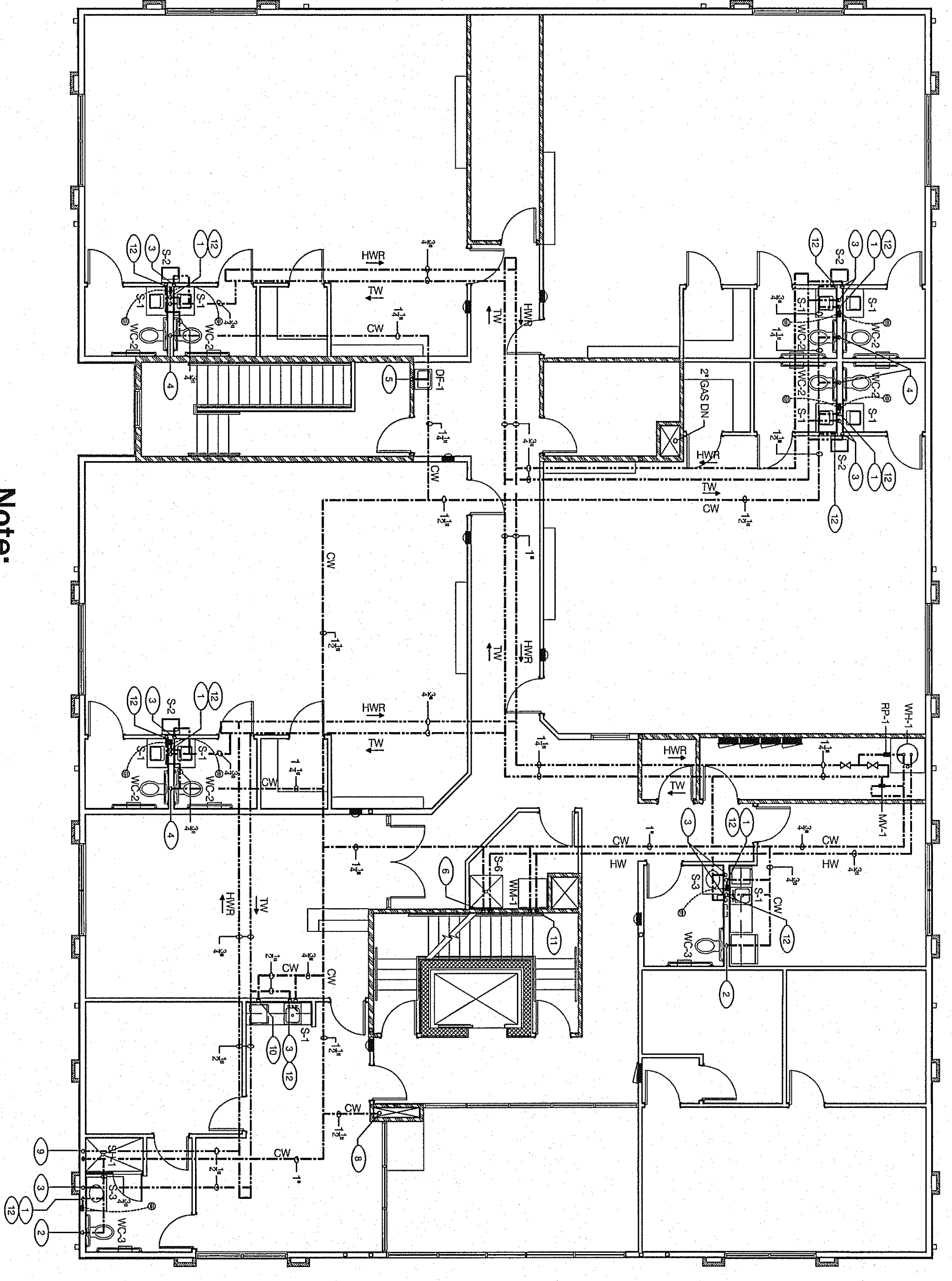
DATE PROJECT No.
 8-17-09 29001
 SHEET No.
P3.0



PLAN NORTH

GROUND FLOOR DOMESTIC WATER & NATURAL GAS PLAN
 SCALE: 1/8" = 1'-0"

Note:
 1. DOMESTIC WATER AND NATURAL GAS PIPING SHALL BE PLUMB BELOW FLOOR TRUSSES, ALL PIPE PENETRATIONS SHALL BE SEALED.
 2. DOMESTIC WATER PIPE SIZES BASED ON METRIC PRESSURE RANGE OF 40 TO 60 PSI AND REMOTE FIXTURE SEPARATION OF 125 FEET. PLUMBING CONNECTION TO ADJUST PIPE SIZES FOR PRESSURE RANGES AND SEPARATION.



PLAN NORTH

SECOND FLOOR DOMESTIC WATER & NATURAL GAS PLAN
 SCALE: 1/8" = 1'-0"

Note:
 1. DOMESTIC WATER AND NATURAL GAS PIPING SHALL BE PLUMB BELOW FLOOR TRUSSES, ALL PIPE PENETRATIONS SHALL BE SEALED.
 2. DOMESTIC WATER PIPE SIZES BASED ON METRIC PRESSURE RANGE OF 40 TO 60 PSI AND REMOTE FIXTURE SEPARATION OF 125 FEET. PLUMBING CONNECTION TO ADJUST PIPE SIZES FOR PRESSURE RANGES AND SEPARATION.

NOT USED
 N.T.S.

AH-1	68 HIGH
AH-2	68 HIGH
AH-3	68 HIGH
AH-4	68 HIGH
AH-5	68 HIGH
AH-6	68 HIGH
AH-7	68 HIGH
AH-8	68 HIGH
AH-9	68 HIGH
AH-10	68 HIGH
AH-11	68 HIGH
AH-12	68 HIGH
AH-13	68 HIGH
AH-14	68 HIGH
AH-15	68 HIGH
AH-16	68 HIGH
AH-17	68 HIGH
AH-18	68 HIGH
AH-19	68 HIGH
AH-20	68 HIGH
AH-21	68 HIGH
AH-22	68 HIGH
AH-23	68 HIGH
AH-24	68 HIGH
AH-25	68 HIGH
AH-26	68 HIGH
AH-27	68 HIGH
AH-28	68 HIGH
AH-29	68 HIGH
AH-30	68 HIGH
AH-31	68 HIGH
AH-32	68 HIGH
AH-33	68 HIGH
AH-34	68 HIGH
AH-35	68 HIGH
AH-36	68 HIGH
AH-37	68 HIGH
AH-38	68 HIGH
AH-39	68 HIGH
AH-40	68 HIGH
AH-41	68 HIGH
AH-42	68 HIGH
AH-43	68 HIGH
AH-44	68 HIGH
AH-45	68 HIGH
AH-46	68 HIGH
AH-47	68 HIGH
AH-48	68 HIGH
AH-49	68 HIGH
AH-50	68 HIGH
AH-51	68 HIGH
AH-52	68 HIGH
AH-53	68 HIGH
AH-54	68 HIGH
AH-55	68 HIGH
AH-56	68 HIGH
AH-57	68 HIGH
AH-58	68 HIGH
AH-59	68 HIGH
AH-60	68 HIGH
AH-61	68 HIGH
AH-62	68 HIGH
AH-63	68 HIGH
AH-64	68 HIGH
AH-65	68 HIGH
AH-66	68 HIGH
AH-67	68 HIGH
AH-68	68 HIGH
AH-69	68 HIGH
AH-70	68 HIGH
AH-71	68 HIGH
AH-72	68 HIGH
AH-73	68 HIGH
AH-74	68 HIGH
AH-75	68 HIGH
AH-76	68 HIGH
AH-77	68 HIGH
AH-78	68 HIGH
AH-79	68 HIGH
AH-80	68 HIGH
AH-81	68 HIGH
AH-82	68 HIGH
AH-83	68 HIGH
AH-84	68 HIGH
AH-85	68 HIGH
AH-86	68 HIGH
AH-87	68 HIGH
AH-88	68 HIGH
AH-89	68 HIGH
AH-90	68 HIGH
AH-91	68 HIGH
AH-92	68 HIGH
AH-93	68 HIGH
AH-94	68 HIGH
AH-95	68 HIGH
AH-96	68 HIGH
AH-97	68 HIGH
AH-98	68 HIGH
AH-99	68 HIGH
AH-100	68 HIGH
AH-101	68 HIGH
AH-102	68 HIGH
AH-103	68 HIGH
AH-104	68 HIGH
AH-105	68 HIGH
AH-106	68 HIGH
AH-107	68 HIGH
AH-108	68 HIGH
AH-109	68 HIGH
AH-110	68 HIGH
AH-111	68 HIGH
AH-112	68 HIGH
AH-113	68 HIGH
AH-114	68 HIGH
AH-115	68 HIGH
AH-116	68 HIGH
AH-117	68 HIGH
AH-118	68 HIGH
AH-119	68 HIGH
AH-120	68 HIGH
AH-121	68 HIGH
AH-122	68 HIGH
AH-123	68 HIGH
AH-124	68 HIGH
AH-125	68 HIGH
AH-126	68 HIGH
AH-127	68 HIGH
AH-128	68 HIGH
AH-129	68 HIGH
AH-130	68 HIGH
AH-131	68 HIGH
AH-132	68 HIGH
AH-133	68 HIGH
AH-134	68 HIGH
AH-135	68 HIGH
AH-136	68 HIGH
AH-137	68 HIGH
AH-138	68 HIGH
AH-139	68 HIGH
AH-140	68 HIGH
AH-141	68 HIGH
AH-142	68 HIGH
AH-143	68 HIGH
AH-144	68 HIGH
AH-145	68 HIGH
AH-146	68 HIGH
AH-147	68 HIGH
AH-148	68 HIGH
AH-149	68 HIGH
AH-150	68 HIGH
AH-151	68 HIGH
AH-152	68 HIGH
AH-153	68 HIGH
AH-154	68 HIGH
AH-155	68 HIGH
AH-156	68 HIGH
AH-157	68 HIGH
AH-158	68 HIGH
AH-159	68 HIGH
AH-160	68 HIGH
AH-161	68 HIGH
AH-162	68 HIGH
AH-163	68 HIGH
AH-164	68 HIGH
AH-165	68 HIGH
AH-166	68 HIGH
AH-167	68 HIGH
AH-168	68 HIGH
AH-169	68 HIGH
AH-170	68 HIGH
AH-171	68 HIGH
AH-172	68 HIGH
AH-173	68 HIGH
AH-174	68 HIGH
AH-175	68 HIGH
AH-176	68 HIGH
AH-177	68 HIGH
AH-178	68 HIGH
AH-179	68 HIGH
AH-180	68 HIGH
AH-181	68 HIGH
AH-182	68 HIGH
AH-183	68 HIGH
AH-184	68 HIGH
AH-185	68 HIGH
AH-186	68 HIGH
AH-187	68 HIGH
AH-188	68 HIGH
AH-189	68 HIGH
AH-190	68 HIGH
AH-191	68 HIGH
AH-192	68 HIGH
AH-193	68 HIGH
AH-194	68 HIGH
AH-195	68 HIGH
AH-196	68 HIGH
AH-197	68 HIGH
AH-198	68 HIGH
AH-199	68 HIGH
AH-200	68 HIGH
AH-201	68 HIGH
AH-202	68 HIGH
AH-203	68 HIGH
AH-204	68 HIGH
AH-205	68 HIGH
AH-206	68 HIGH
AH-207	68 HIGH
AH-208	68 HIGH
AH-209	68 HIGH
AH-210	68 HIGH
AH-211	68 HIGH
AH-212	68 HIGH
AH-213	68 HIGH
AH-214	68 HIGH
AH-215	68 HIGH
AH-216	68 HIGH
AH-217	68 HIGH
AH-218	68 HIGH
AH-219	68 HIGH
AH-220	68 HIGH
AH-221	68 HIGH
AH-222	68 HIGH
AH-223	68 HIGH
AH-224	68 HIGH
AH-225	68 HIGH
AH-226	68 HIGH
AH-227	68 HIGH
AH-228	68 HIGH
AH-229	68 HIGH
AH-230	68 HIGH
AH-231	68 HIGH
AH-232	68 HIGH
AH-233	68 HIGH
AH-234	68 HIGH
AH-235	68 HIGH
AH-236	68 HIGH
AH-237	68 HIGH
AH-238	68 HIGH
AH-239	68 HIGH
AH-240	68 HIGH
AH-241	68 HIGH
AH-242	68 HIGH
AH-243	68 HIGH
AH-244	68 HIGH
AH-245	68 HIGH
AH-246	68 HIGH
AH-247	68 HIGH
AH-248	68 HIGH
AH-249	68 HIGH
AH-250	68 HIGH
AH-251	68 HIGH
AH-252	68 HIGH
AH-253	68 HIGH
AH-254	68 HIGH
AH-255	68 HIGH
AH-256	68 HIGH
AH-257	68 HIGH
AH-258	68 HIGH
AH-259	68 HIGH
AH-260	68 HIGH
AH-261	68 HIGH
AH-262	68 HIGH
AH-263	68 HIGH
AH-264	68 HIGH
AH-265	68 HIGH
AH-266	68 HIGH
AH-267	68 HIGH
AH-268	68 HIGH
AH-269	68 HIGH
AH-270	68 HIGH
AH-271	68 HIGH
AH-272	68 HIGH
AH-273	68 HIGH
AH-274	68 HIGH
AH-275	68 HIGH
AH-276	68 HIGH
AH-277	68 HIGH
AH-278	68 HIGH
AH-279	68 HIGH
AH-280	68 HIGH
AH-281	68 HIGH
AH-282	68 HIGH
AH-283	68 HIGH
AH-284	68 HIGH
AH-285	68 HIGH
AH-286	68 HIGH
AH-287	68 HIGH
AH-288	68 HIGH
AH-289	68 HIGH
AH-290	68 HIGH
AH-291	68 HIGH
AH-292	68 HIGH
AH-293	68 HIGH
AH-294	68 HIGH
AH-295	68 HIGH
AH-296	68 HIGH
AH-297	68 HIGH
AH-298	68 HIGH
AH-299	68 HIGH
AH-300	68 HIGH
AH-301	68 HIGH
AH-302	68 HIGH
AH-303	68 HIGH
AH-304	68 HIGH
AH-305	68 HIGH
AH-306	68 HIGH
AH-307	68 HIGH
AH-308	68 HIGH
AH-309	68 HIGH
AH-310	68 HIGH
AH-311	68 HIGH
AH-312	68 HIGH
AH-313	68 HIGH
AH-314	68 HIGH
AH-315	68 HIGH
AH-316	68 HIGH
AH-317	68 HIGH
AH-318	68 HIGH
AH-319	68 HIGH
AH-320	68 HIGH
AH-321	68 HIGH
AH-322	68 HIGH
AH-323	68 HIGH
AH-324	68 HIGH
AH-325	68 HIGH
AH-326	68 HIGH
AH-327	68 HIGH
AH-328	68 HIGH
AH-329	68 HIGH
AH-330	68 HIGH
AH-331	68 HIGH
AH-332	68 HIGH
AH-333	68 HIGH
AH-334	68 HIGH
AH-335	68 HIGH
AH-336	68 HIGH
AH-337	68 HIGH
AH-338	68 HIGH
AH-339	68 HIGH
AH-340	68 HIGH
AH-341	68 HIGH
AH-342	68 HIGH
AH-343	68 HIGH
AH-344	68 HIGH
AH-345	68 HIGH
AH-346	68 HIGH
AH-347	68 HIGH
AH-348	68 HIGH
AH-349	68 HIGH
AH-350	68 HIGH
AH-351	68 HIGH
AH-352	68 HIGH
AH-353	68 HIGH
AH-354	68 HIGH
AH-355	68 HIGH
AH-356	68 HIGH
AH-357	68 HIGH
AH-358	68 HIGH
AH-359	68 HIGH
AH-360	68 HIGH
AH-361	68 HIGH
AH-362	68 HIGH
AH-363	68 HIGH
AH-364	68 HIGH
AH-365	68 HIGH
AH-366	68 HIGH
AH-367	68 HIGH
AH-368	68 HIGH
AH-369	68 HIGH
AH-370	68 HIGH
AH-371	68 HIGH
AH-372	68 HIGH
AH-373	68 HIGH
AH-374	68 HIGH
AH-375	68 HIGH
AH-376	68 HIGH
AH-377	68 HIGH
AH-378	68 HIGH
AH-379	68 HIGH
AH-380	68 HIGH
AH-381	68 HIGH
AH-382	68 HIGH
AH-383	68 HIGH
AH-384	68 HIGH
AH-385	68 HIGH
AH-386	68 HIGH
AH-387	68 HIGH
AH-388	68 HIGH
AH-389	68 HIGH
AH-390	68 HIGH
AH-391	68 HIGH
AH-392	68 HIGH
AH-393	68 HIGH
AH-394	68 HIGH
AH-395	68 HIGH
AH-396	68 HIGH
AH-397	68 HIGH
AH-398	68 HIGH
AH-399	68 HIGH
AH-400	68 HIGH
AH-401	68 HIGH
AH-402	68 HIGH
AH-403	68 HIGH
AH-404	68 HIGH
AH-405	68 HIGH
AH-406	68 HIGH
AH-407	68 HIGH
AH-408	68 HIGH
AH-409	68 HIGH
AH-410	68 HIGH
AH-411	68 HIGH
AH-412	68 HIGH
AH-413	68 HIGH
AH-414	68 HIGH
AH-415	68 HIGH
AH-416	68 HIGH
AH-417	68 HIGH
AH-418	68 HIGH
AH-419	68 HIGH
AH-420	68 HIGH
AH-421	68 HIGH
AH-422	68 HIGH
AH-423	68 HIGH
AH-424	68 HIGH
AH-425	68 HIGH
AH-426	68 HIGH
AH-427	68 HIGH
AH-428	68 HIGH
AH-429	68 HIGH
AH-430	68 HIGH
AH-431	68 HIGH
AH-432	68 HIGH
AH-433	68 HIGH
AH-434	68 HIGH
AH-435	68 HIGH
AH-436	68 HIGH
AH-437	68 HIGH
AH-438	68 HIGH
AH-439	68 HIGH
AH-440	68 HIGH
AH-441	68 HIGH
AH-442	68 HIGH
AH-443	68 HIGH
AH-444	68 HIGH
AH-445	68 HIGH
AH-446	68 HIGH
AH-447	68 HIGH
AH-448	68 HIGH
AH-449	68 HIGH
AH-450	68 HIGH
AH-451	68 HIGH
AH-452	68 HIGH
AH-453	68 HIGH
AH-454	68 HIGH
AH-455	68 HIGH
AH-456	68 HIGH
AH-457	68 HIGH
AH-458	68 HIGH
AH-459	68 HIGH
AH-460	68 HIGH
AH-461	68 HIGH
AH-462	68 HIGH
AH-463	68 HIGH
AH-464	68 HIGH
AH-465	68 HIGH
AH-466	68 HIGH
AH-467	68 HIGH
AH-468	68 HIGH
AH-469	68 HIGH
AH-470	68 HIGH
AH-471	68 HIGH
AH-472	68 HIGH
AH-473	68 HIGH
AH-474	68 HIGH
AH-475	68 HIGH
AH-476	68 HIGH
AH-477	68 HIGH
AH-478	68 HIGH
AH-479	68 HIGH
AH-480	68 HIGH
AH-481	68 HIGH
AH-482	68 HIGH
AH-483	68 HIGH
AH-484	68 HIGH
AH-485	68 HIGH
AH-486	68 HIGH
AH-487	68 HIGH
AH-488	68 HIGH
AH	