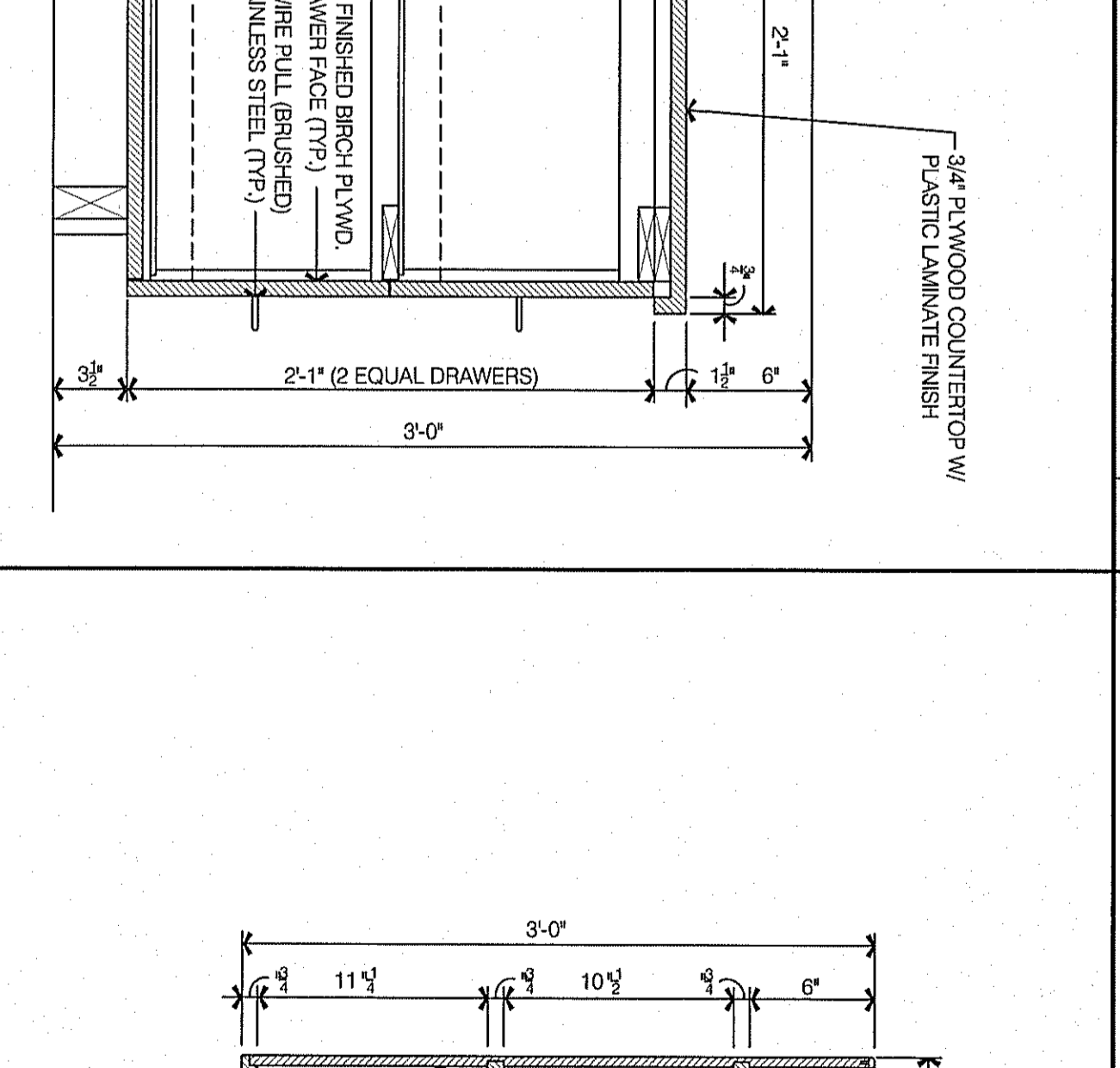
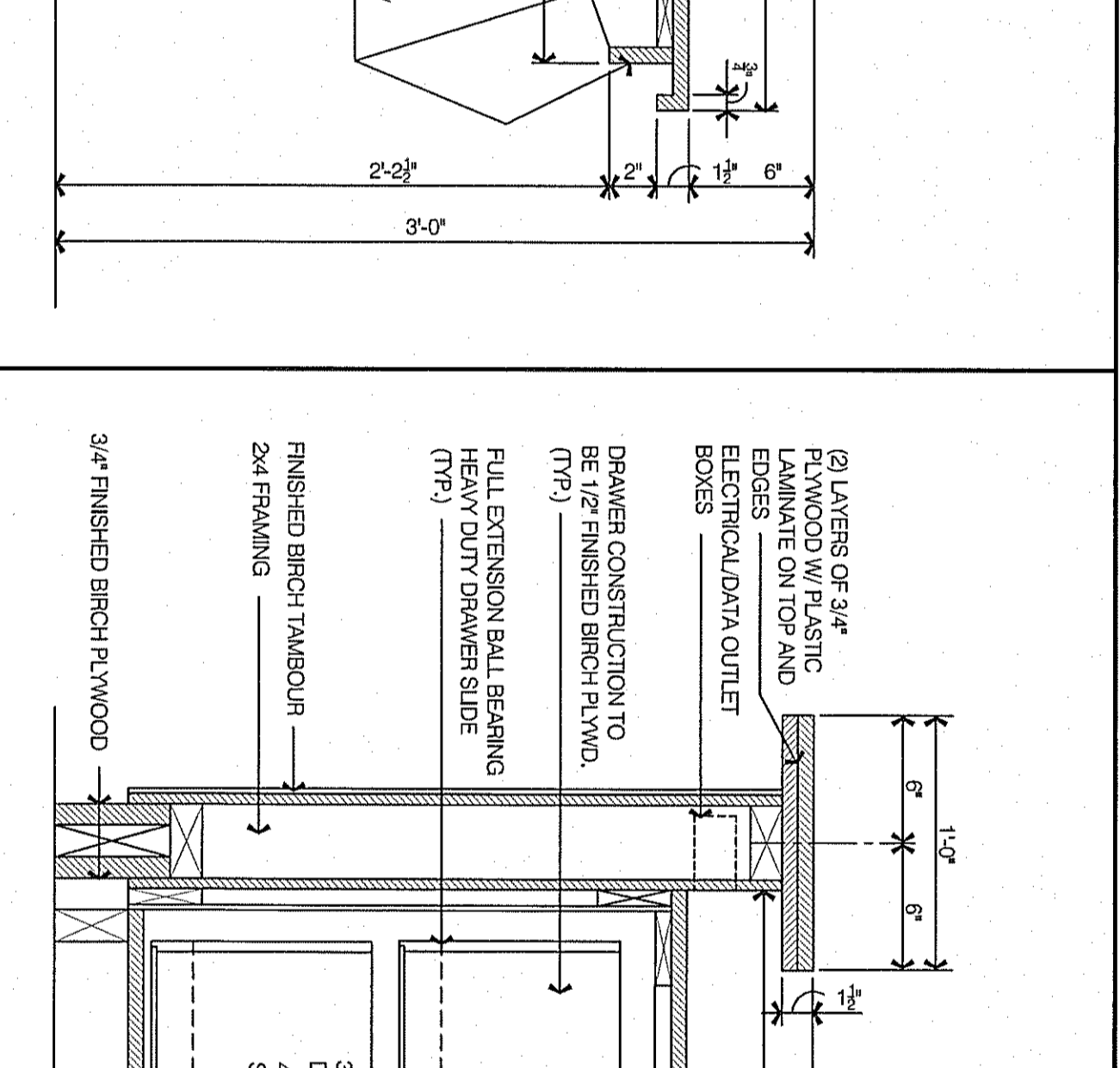
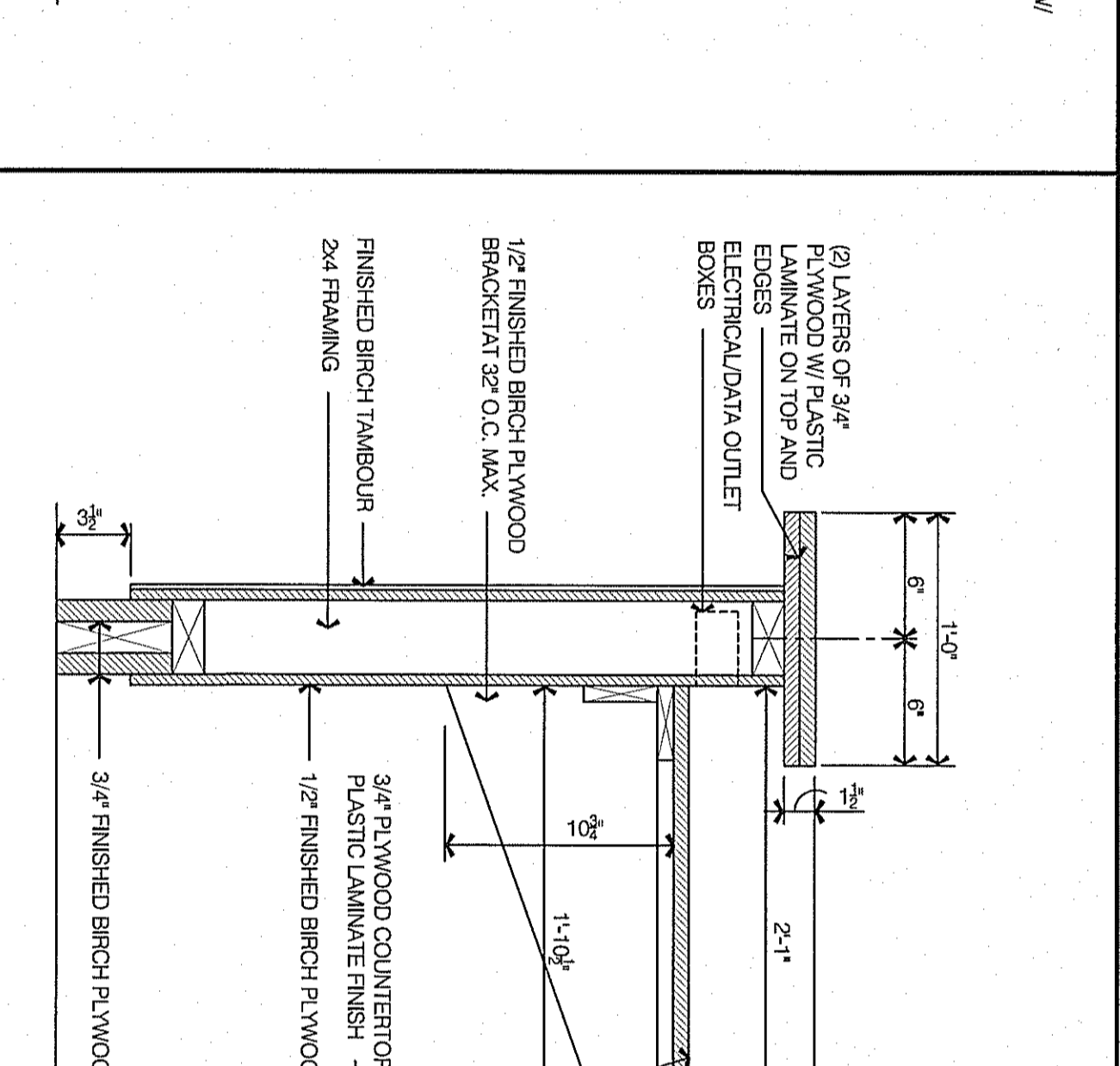
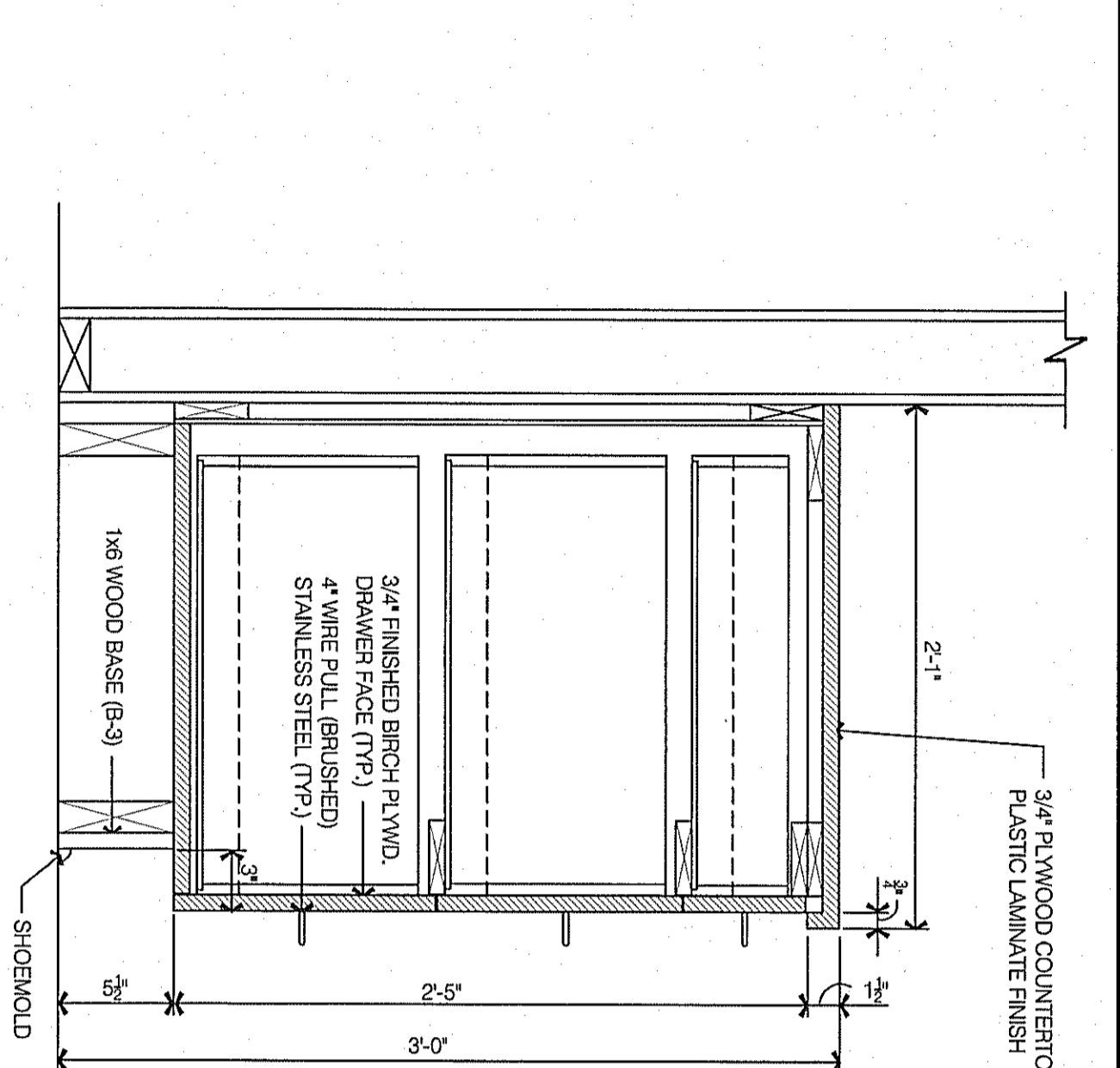
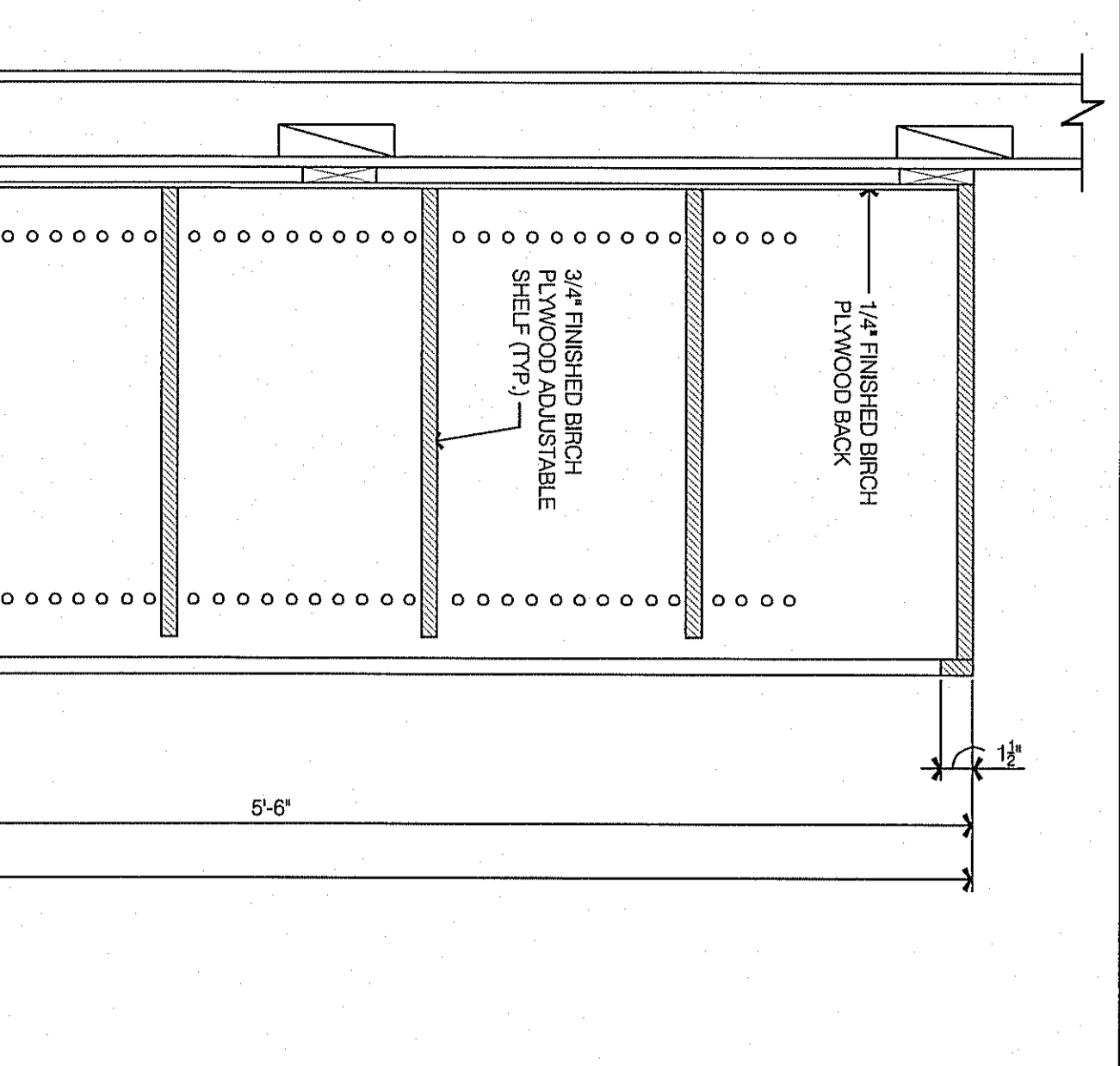
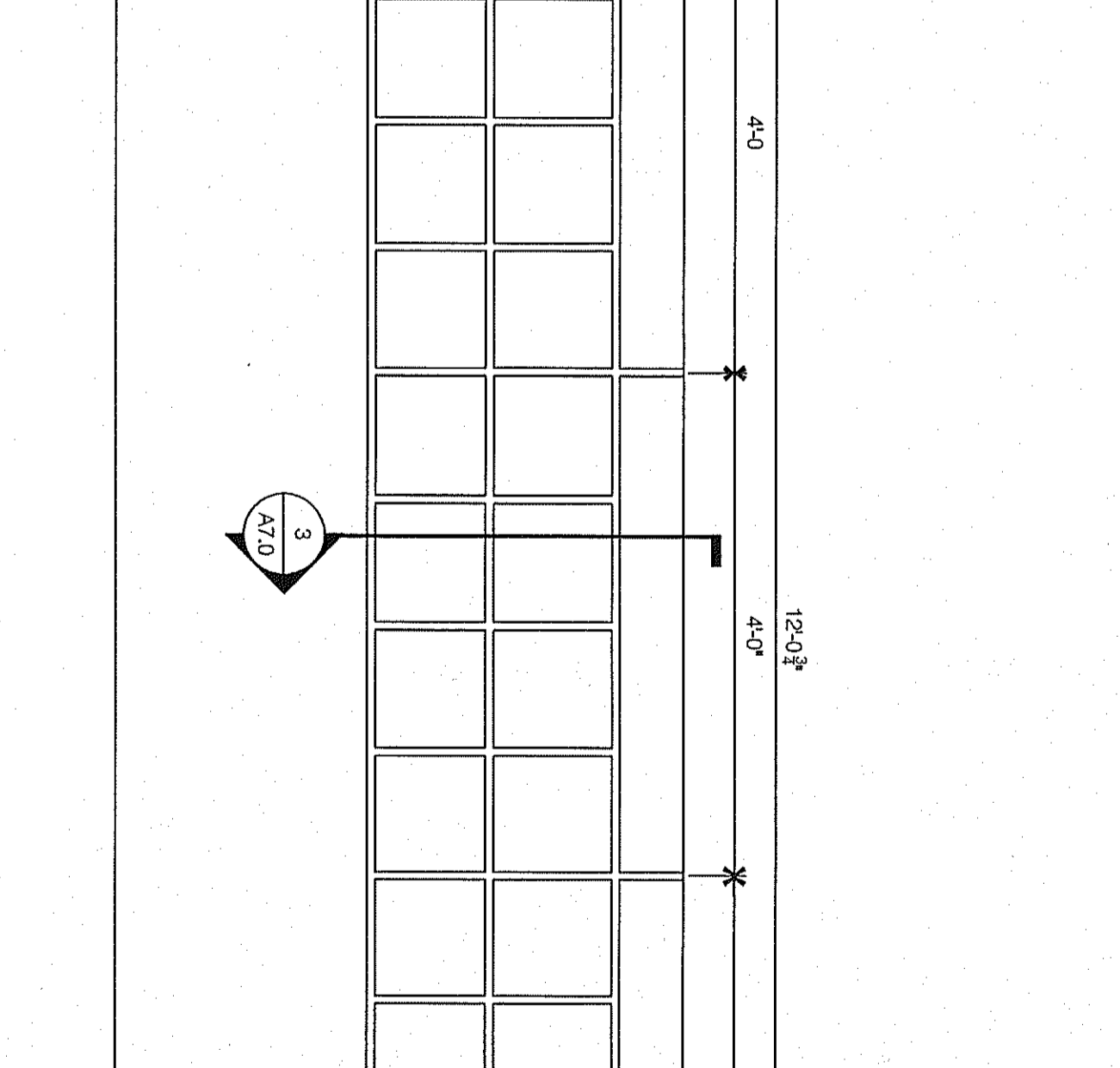
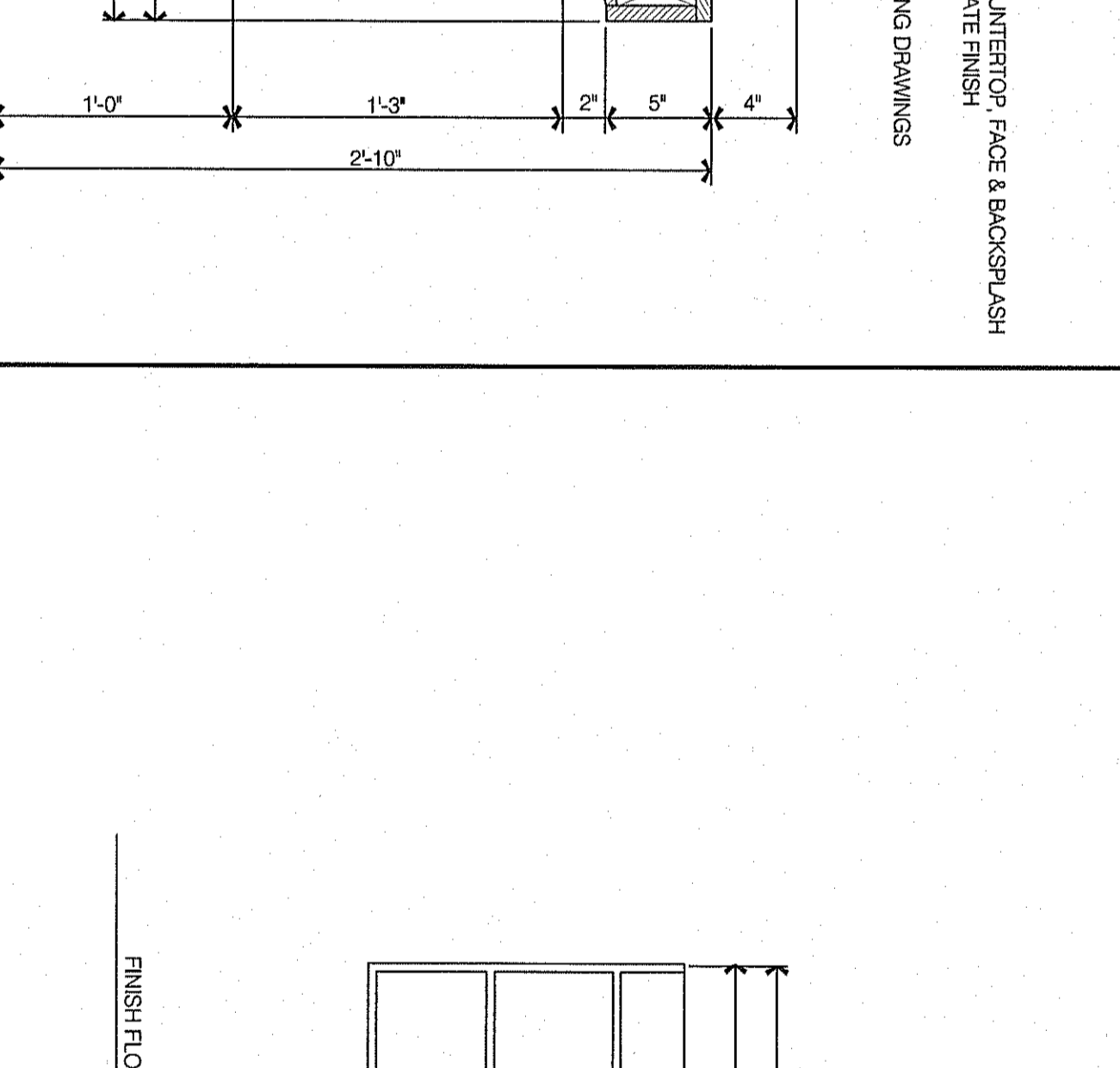
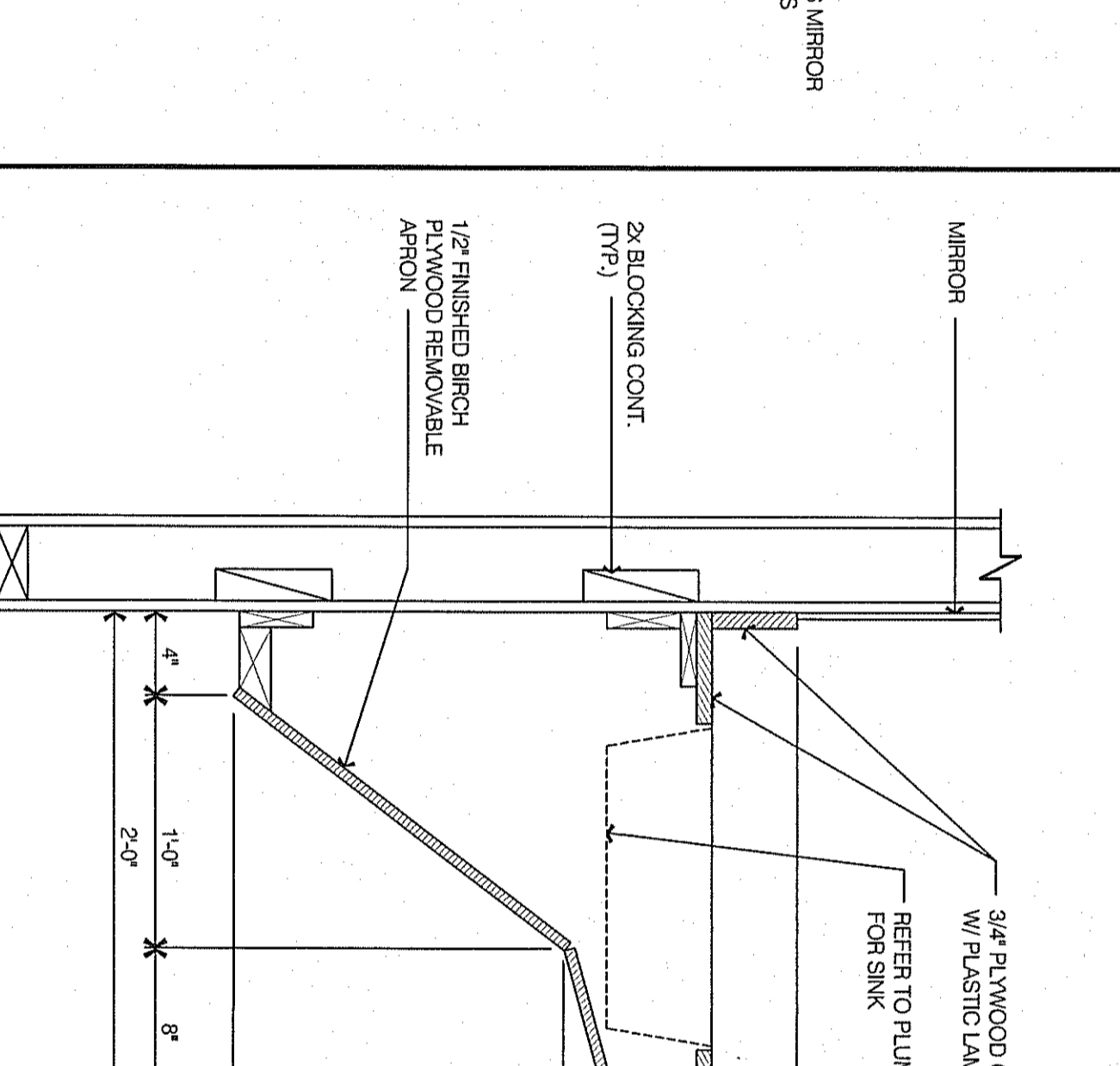
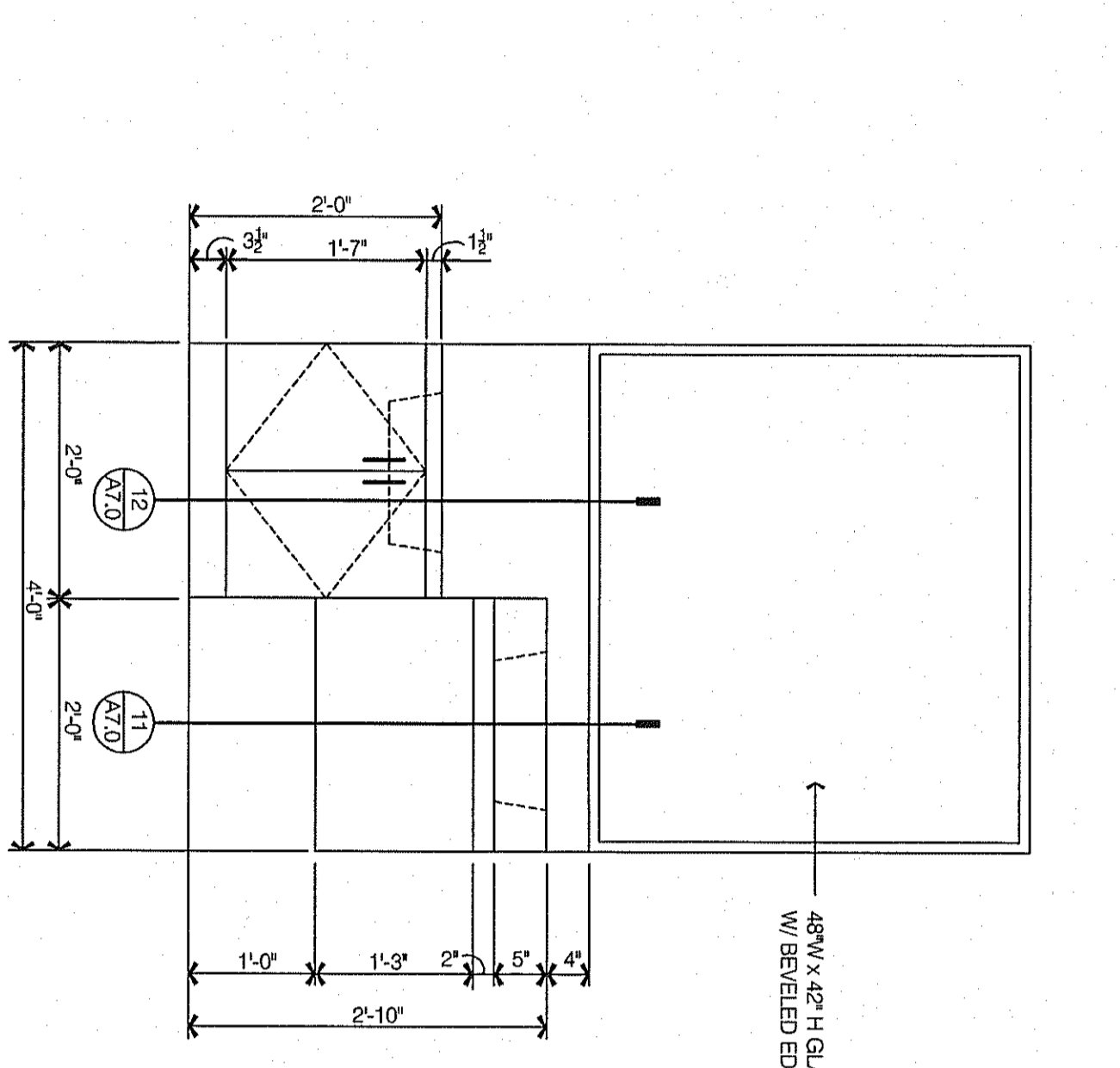
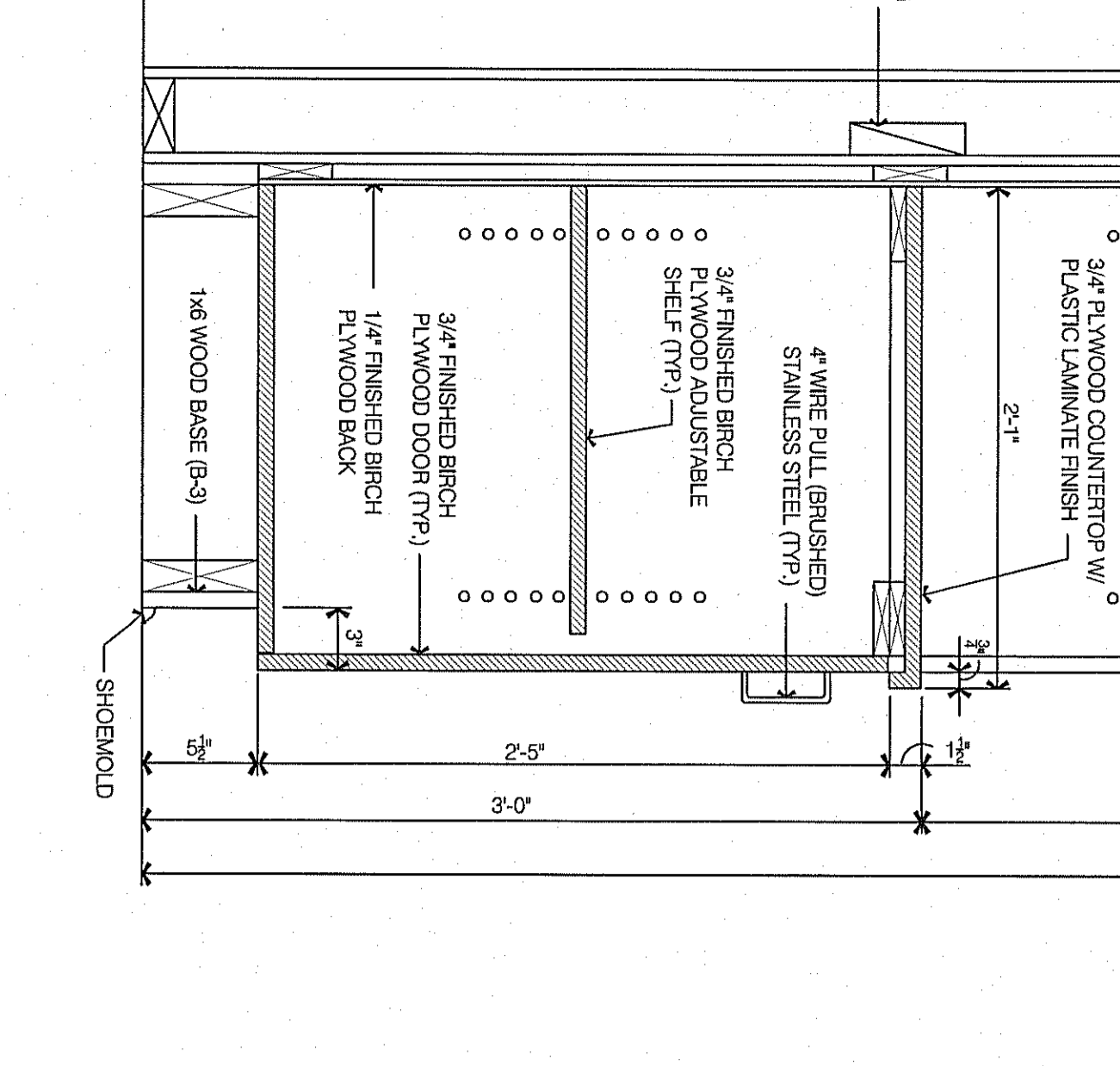


RECEPTIONIST DESK PLAN & ELEVATIONS
PLAN SCALE: 1/4" = 1'-0"
ELEVATION SCALE: 3/8" = 1'-0"

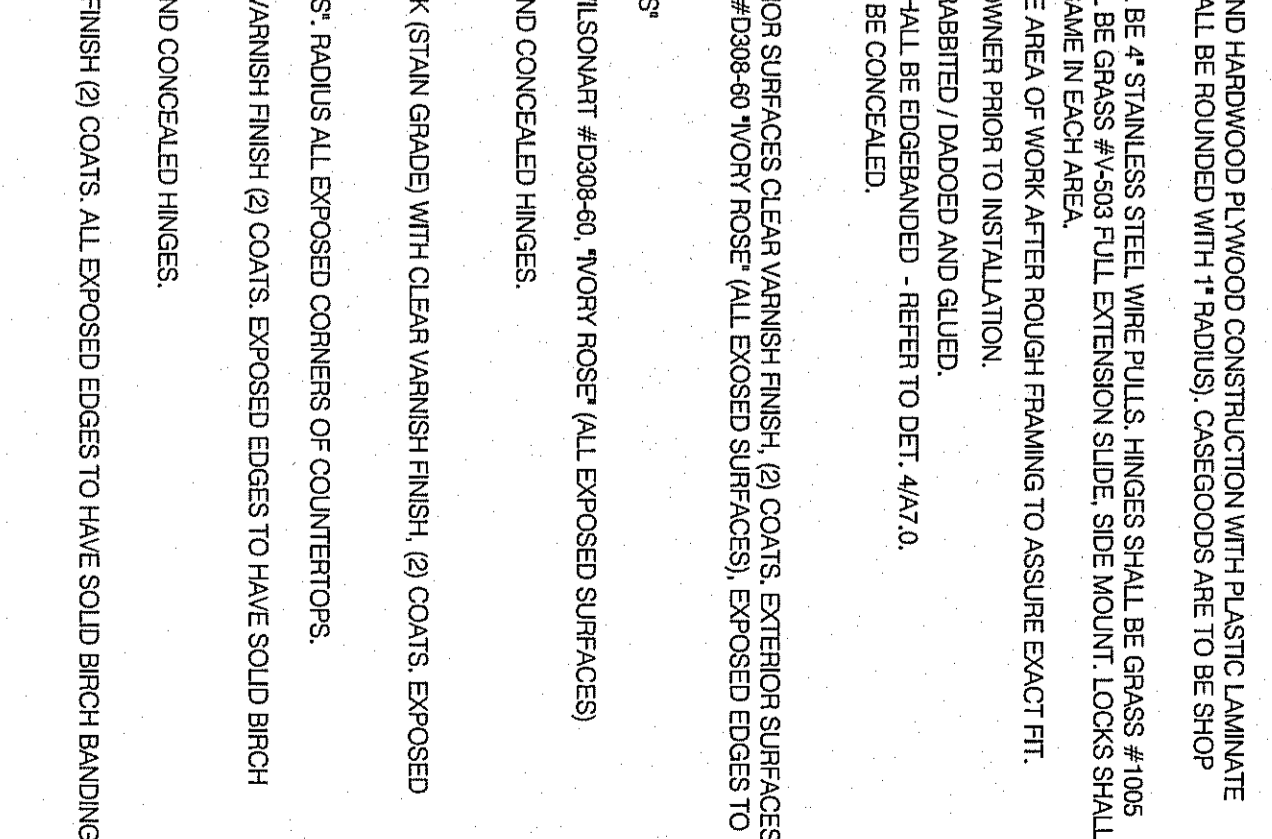
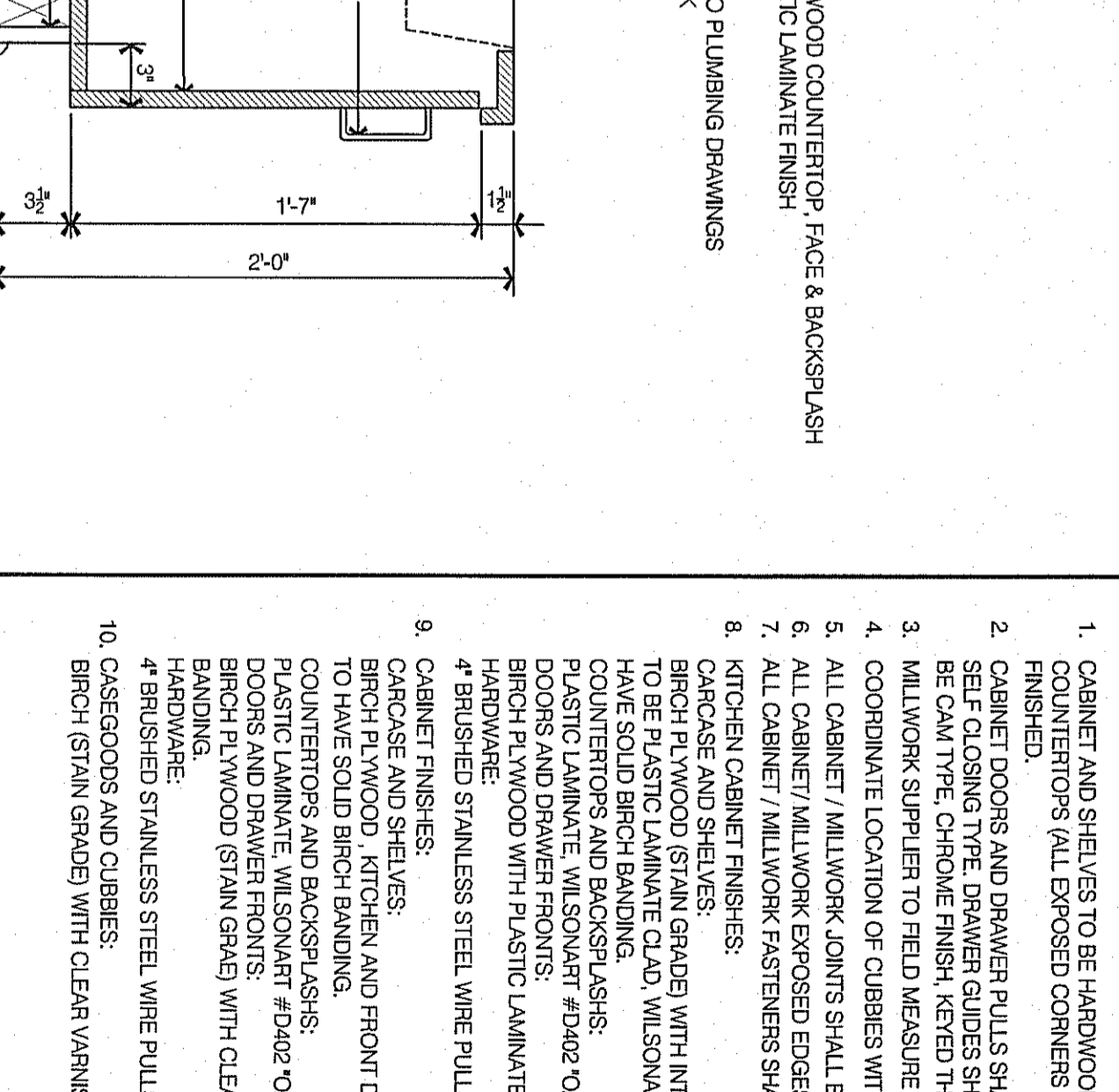
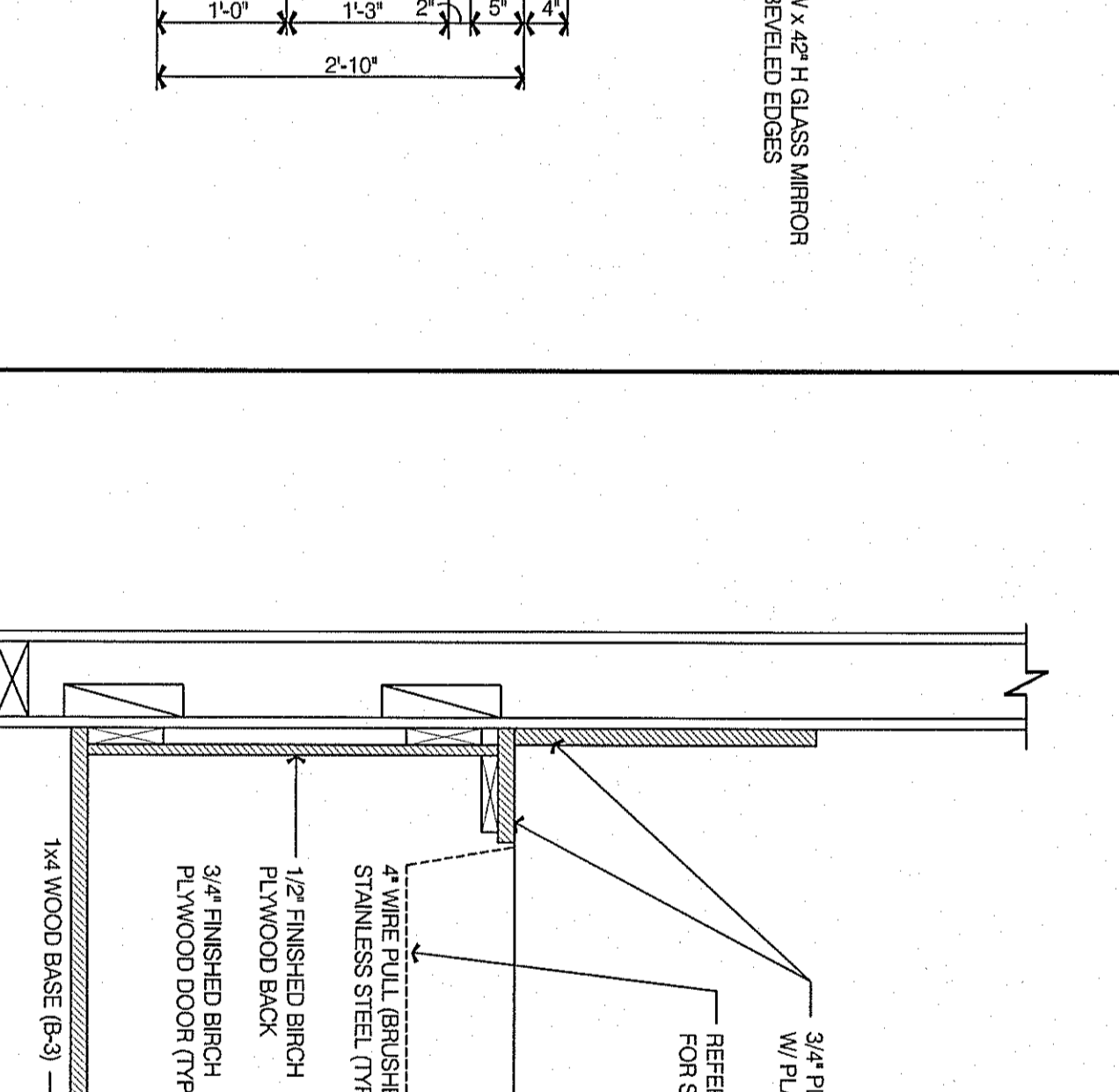
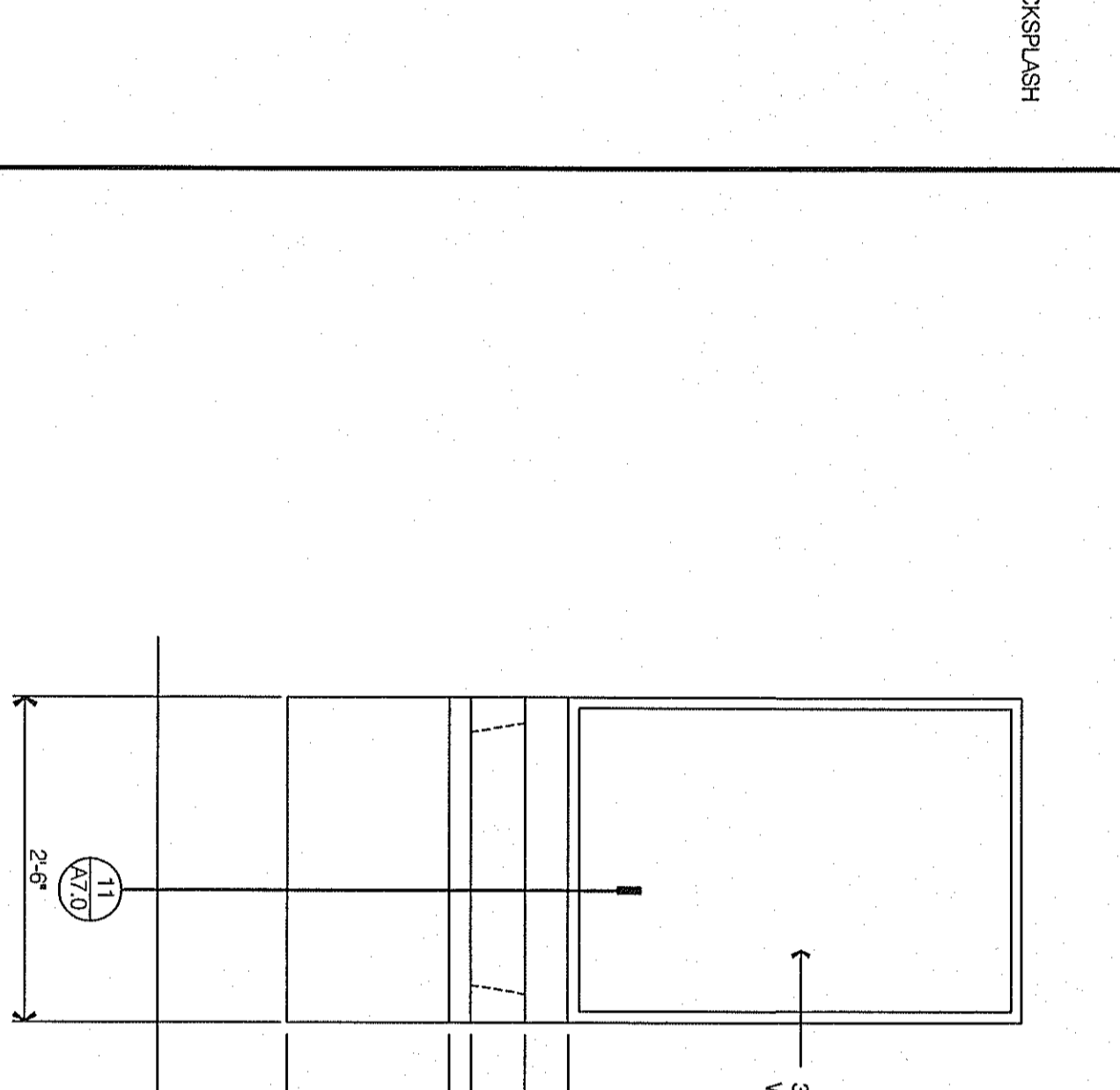
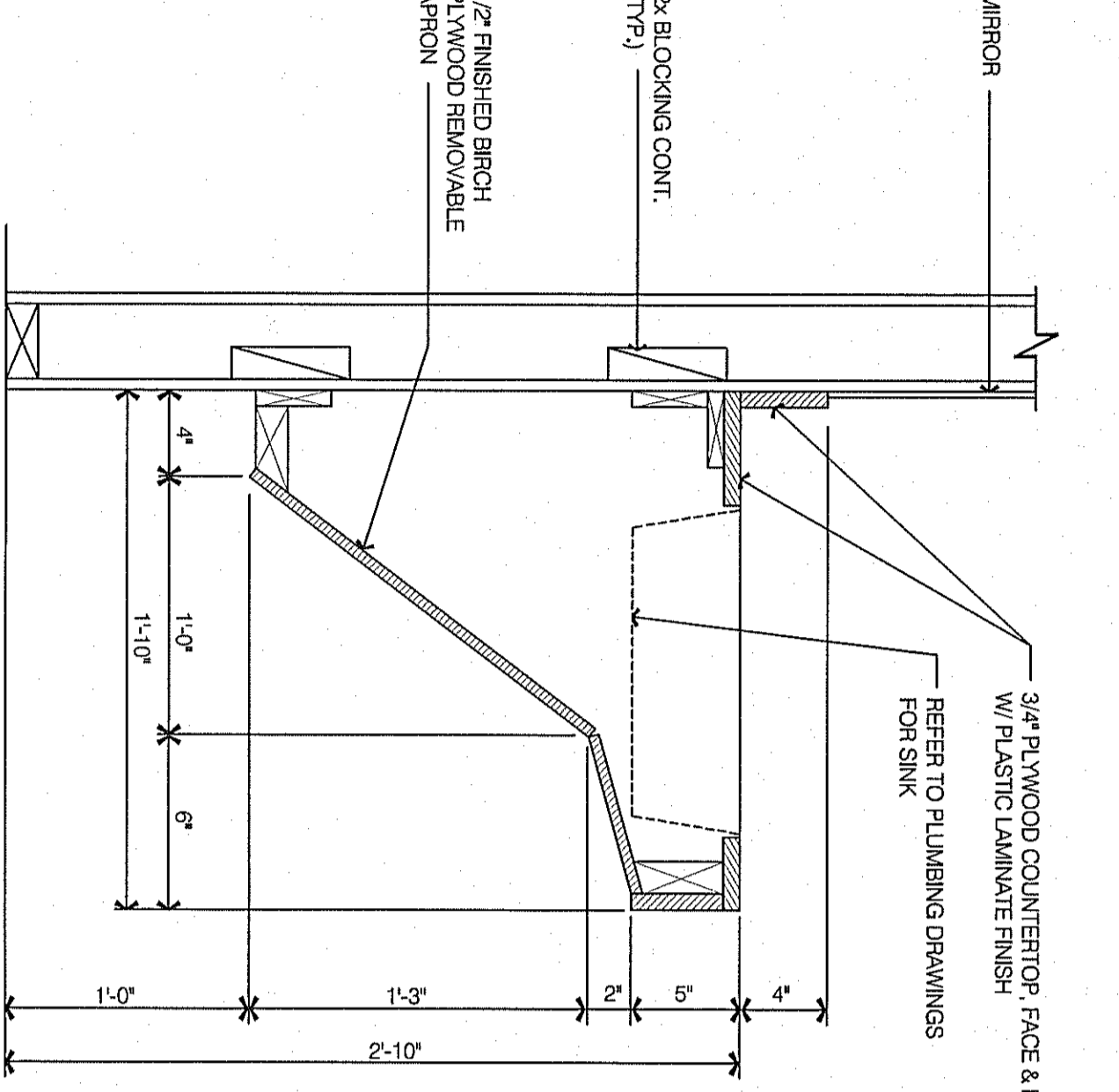
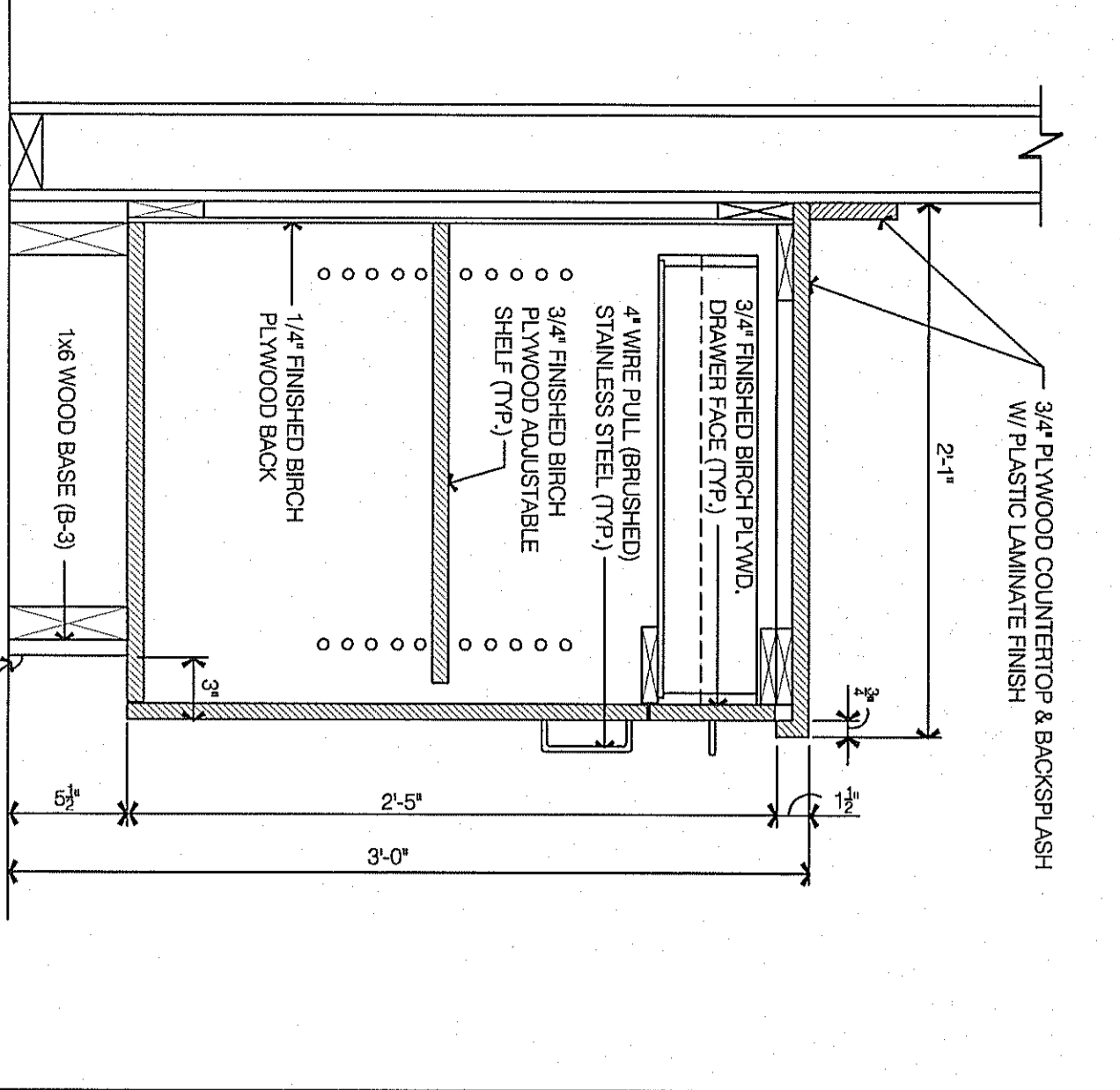


CABINET DRAWER SECTION
SCALE: 1/4" = 1'-0"



CABINET/SHELF SECTION
SCALE: 1/4" = 1'-0"

CUBBIE ELEVATION
SCALE: 3/4" = 1'-0"



COFFEE STAND SECTION
SCALE: 1/4" = 1'-0"

SINK SECTION
SCALE: 3/4" = 1'-0"

GENERAL NOTES
N.T.S.

- CABINET AND SHELVES TO BE HARDWOOD AND HARDWOOD PLYWOOD CONSTRUCTION WITH PLASTIC LAMINATE FINISH.
- CABINET DOORS AND DRAWER PULLS SHALL BE 4" STAINLESS STEEL WIRE PULLS. HINGES SHALL BE GRASS # 105 SELF COILING TYPE. DRAWER PULLS SHALL BE GRASS # 105 FULL EXTENSION SLIDE. SILENT LOCKS SHALL BE 1/2" EXTENSION SLIDE. HINGES SHALL BE GRASS # 105 FULL EXTENSION SLIDE. SILENT LOCKS SHALL BE 1/2" EXTENSION SLIDE.
- MATERIAL SUPPLIER TO FIELD VERIFY THE AREA OF WORK AFTER REVIEW FRAMING TO ASSURE EXACT FIT.
- COORDINATE LOCATION OF CUBBIES WITH OWNER PRIOR TO INSTALLATION.
- ALL CABINET/MATERIALWORK EXPOSED EDGES SHALL BE EDGBANDED - REFER TO DET. 447/A.
- ALL CABINET/MATERIALWORK EXPOSED EDGES SHALL BE EDGBANDED - REFER TO DET. 447/A.
- KITCHEN CABINET FINISHES:
 - INTERIOR SURFACES: CLEAR VARNISH FINISH (2) COATS. EXTERIOR SURFACES TO BE PLASTIC LAMINATE. CLO. W/SHOWN # 808-89 W/GR ROSE (ALL EXPOSED SURFACES). EXPOSED EDGES TO HAVE SOLID BIRCH BANDING.
 - INTERIOR SURFACES: CLEAR VARNISH FINISH (2) COATS. EXTERIOR SURFACES TO BE PLASTIC LAMINATE. CLO. W/SHOWN # 808-89 W/GR ROSE (ALL EXPOSED SURFACES). EXPOSED EDGES TO HAVE SOLID BIRCH BANDING.
 - INTERIOR SURFACES: CLEAR VARNISH FINISH (2) COATS. EXTERIOR SURFACES TO BE PLASTIC LAMINATE. CLO. W/SHOWN # 808-89 W/GR ROSE (ALL EXPOSED SURFACES). EXPOSED EDGES TO HAVE SOLID BIRCH BANDING.
 - INTERIOR SURFACES: CLEAR VARNISH FINISH (2) COATS. EXTERIOR SURFACES TO BE PLASTIC LAMINATE. CLO. W/SHOWN # 808-89 W/GR ROSE (ALL EXPOSED SURFACES). EXPOSED EDGES TO HAVE SOLID BIRCH BANDING.
- ALL CABINET/MATERIALWORK EXPOSED EDGES SHALL BE EDGBANDED - REFER TO DET. 447/A.
- CABINET FINISHES:
 - INTERIOR SURFACES: CLEAR VARNISH FINISH (2) COATS. EXTERIOR SURFACES TO BE PLASTIC LAMINATE. CLO. W/SHOWN # 808-89 W/GR ROSE (ALL EXPOSED SURFACES). EXPOSED EDGES TO HAVE SOLID BIRCH BANDING.
 - INTERIOR SURFACES: CLEAR VARNISH FINISH (2) COATS. EXTERIOR SURFACES TO BE PLASTIC LAMINATE. CLO. W/SHOWN # 808-89 W/GR ROSE (ALL EXPOSED SURFACES). EXPOSED EDGES TO HAVE SOLID BIRCH BANDING.
 - INTERIOR SURFACES: CLEAR VARNISH FINISH (2) COATS. EXTERIOR SURFACES TO BE PLASTIC LAMINATE. CLO. W/SHOWN # 808-89 W/GR ROSE (ALL EXPOSED SURFACES). EXPOSED EDGES TO HAVE SOLID BIRCH BANDING.
 - INTERIOR SURFACES: CLEAR VARNISH FINISH (2) COATS. EXTERIOR SURFACES TO BE PLASTIC LAMINATE. CLO. W/SHOWN # 808-89 W/GR ROSE (ALL EXPOSED SURFACES). EXPOSED EDGES TO HAVE SOLID BIRCH BANDING.
- CABINET FINISHES:
 - INTERIOR SURFACES: CLEAR VARNISH FINISH (2) COATS. EXTERIOR SURFACES TO BE PLASTIC LAMINATE. CLO. W/SHOWN # 808-89 W/GR ROSE (ALL EXPOSED SURFACES). EXPOSED EDGES TO HAVE SOLID BIRCH BANDING.
 - INTERIOR SURFACES: CLEAR VARNISH FINISH (2) COATS. EXTERIOR SURFACES TO BE PLASTIC LAMINATE. CLO. W/SHOWN # 808-89 W/GR ROSE (ALL EXPOSED SURFACES). EXPOSED EDGES TO HAVE SOLID BIRCH BANDING.
 - INTERIOR SURFACES: CLEAR VARNISH FINISH (2) COATS. EXTERIOR SURFACES TO BE PLASTIC LAMINATE. CLO. W/SHOWN # 808-89 W/GR ROSE (ALL EXPOSED SURFACES). EXPOSED EDGES TO HAVE SOLID BIRCH BANDING.
 - INTERIOR SURFACES: CLEAR VARNISH FINISH (2) COATS. EXTERIOR SURFACES TO BE PLASTIC LAMINATE. CLO. W/SHOWN # 808-89 W/GR ROSE (ALL EXPOSED SURFACES). EXPOSED EDGES TO HAVE SOLID BIRCH BANDING.
- CABINET FINISHES:
 - INTERIOR SURFACES: CLEAR VARNISH FINISH (2) COATS. EXTERIOR SURFACES TO BE PLASTIC LAMINATE. CLO. W/SHOWN # 808-89 W/GR ROSE (ALL EXPOSED SURFACES). EXPOSED EDGES TO HAVE SOLID BIRCH BANDING.
 - INTERIOR SURFACES: CLEAR VARNISH FINISH (2) COATS. EXTERIOR SURFACES TO BE PLASTIC LAMINATE. CLO. W/SHOWN # 808-89 W/GR ROSE (ALL EXPOSED SURFACES). EXPOSED EDGES TO HAVE SOLID BIRCH BANDING.
 - INTERIOR SURFACES: CLEAR VARNISH FINISH (2) COATS. EXTERIOR SURFACES TO BE PLASTIC LAMINATE. CLO. W/SHOWN # 808-89 W/GR ROSE (ALL EXPOSED SURFACES). EXPOSED EDGES TO HAVE SOLID BIRCH BANDING.
 - INTERIOR SURFACES: CLEAR VARNISH FINISH (2) COATS. EXTERIOR SURFACES TO BE PLASTIC LAMINATE. CLO. W/SHOWN # 808-89 W/GR ROSE (ALL EXPOSED SURFACES). EXPOSED EDGES TO HAVE SOLID BIRCH BANDING.
- CABINET FINISHES:
 - INTERIOR SURFACES: CLEAR VARNISH FINISH (2) COATS. EXTERIOR SURFACES TO BE PLASTIC LAMINATE. CLO. W/SHOWN # 808-89 W/GR ROSE (ALL EXPOSED SURFACES). EXPOSED EDGES TO HAVE SOLID BIRCH BANDING.
 - INTERIOR SURFACES: CLEAR VARNISH FINISH (2) COATS. EXTERIOR SURFACES TO BE PLASTIC LAMINATE. CLO. W/SHOWN # 808-89 W/GR ROSE (ALL EXPOSED SURFACES). EXPOSED EDGES TO HAVE SOLID BIRCH BANDING.
 - INTERIOR SURFACES: CLEAR VARNISH FINISH (2) COATS. EXTERIOR SURFACES TO BE PLASTIC LAMINATE. CLO. W/SHOWN # 808-89 W/GR ROSE (ALL EXPOSED SURFACES). EXPOSED EDGES TO HAVE SOLID BIRCH BANDING.
 - INTERIOR SURFACES: CLEAR VARNISH FINISH (2) COATS. EXTERIOR SURFACES TO BE PLASTIC LAMINATE. CLO. W/SHOWN # 808-89 W/GR ROSE (ALL EXPOSED SURFACES). EXPOSED EDGES TO HAVE SOLID BIRCH BANDING.

REVISIONS	DATE	PROJECT NO.
	8-17-09	29001



PROJECT LOCATION
3032 OLD MITCHELL ROAD
SARASOTA, FL 34231

PROFESSIONAL SEAL

NOT RELEASED FOR CONSTRUCTION

dennis j. dubey, architect
6327 Point Twenty Two
Gainesville, Georgia 30606
Phone (678) 231-4050
E-Mail: djdarch@bellsouth.net

A7.0
SHEET NO.

DATE
8-17-09

PROJECT NO.
29001

MILLWORK
AND
CABINET
DETAILS