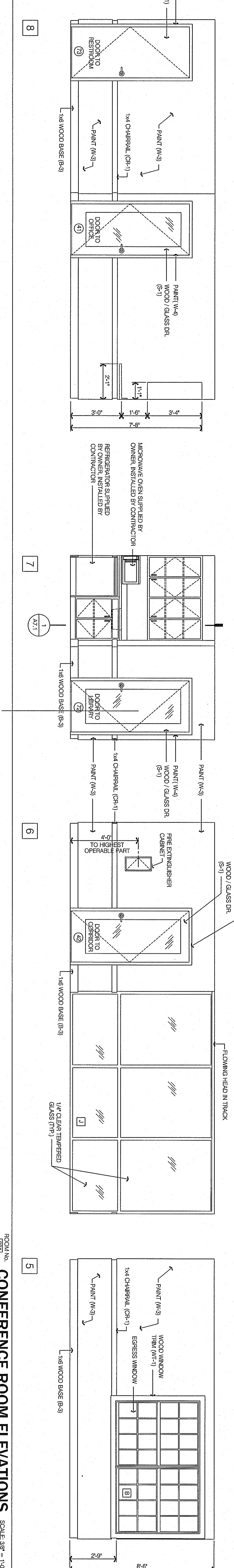
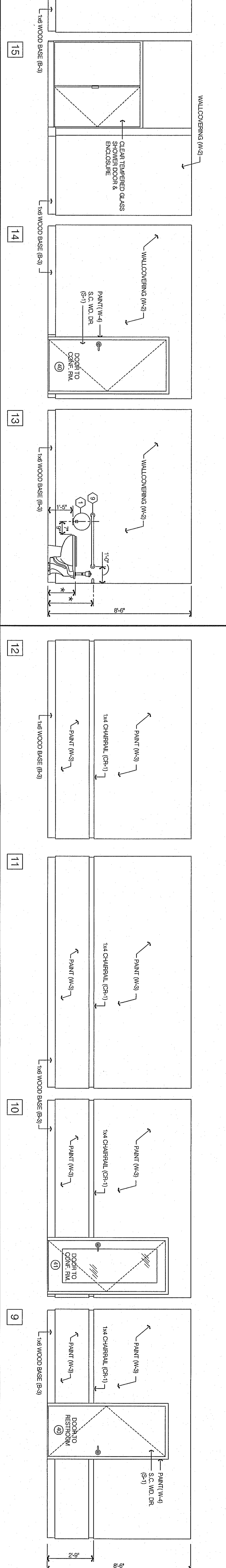


ROOM No. 282 LIBRARY ELEVATIONS SCALE: 3/8" = 1'-0"



ROOM No. 281 CONFERENCE ROOM ELEVATIONS SCALE: 3/8" = 1'-0"

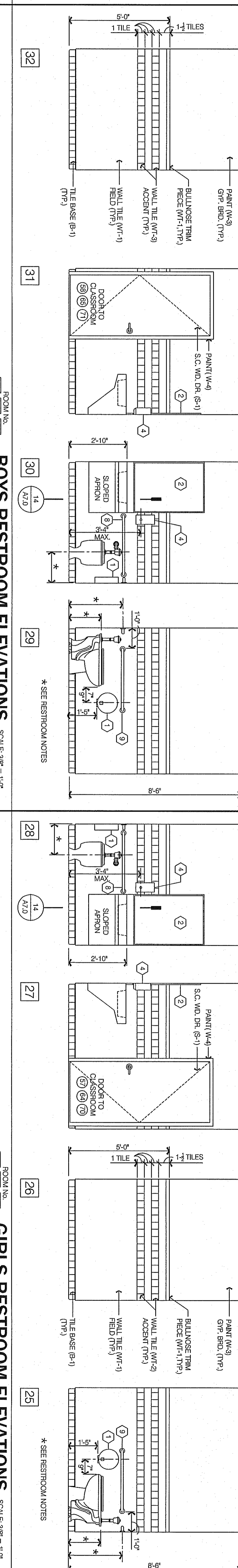


ROOM No. 280 RESTROOM ELEVATIONS SCALE: 3/8" = 1'-0"

ROOM No. 289 OFFICE ELEVATIONS SCALE: 3/8" = 1'-0"

SYMBOL	ITEM	ASTM	SP/STD.	MFR.	MODEL NO.	REMARK
1	TOILET PAPER HOLDER (SJR, MTD)	G.C.	G.C.	BOBRICK	#B-2880	SATIN S.S. FINISH
2	WARRIOR 30"X42" (SJR, MTD)	G.C.	G.C.	BOBRICK	#B-165-3042	SATIN S.S. FINISH
3	WARRIOR 30"X42" (SJR, MTD)	G.C.	G.C.	BOBRICK	#B-165-3042	SATIN S.S. FINISH
4	SOVER DISBURSER (SJR, MTD)	G.C.	G.C.	BOBRICK	#B-389	SATIN S.S. FINISH
5	PAPER TOWEL DISP. / TISSUE RECEPTACLE	G.C.	G.C.	BOBRICK	#B-389	SATIN S.S. FINISH
6	RESTROOM SIGN (SJR, MTD)	G.C.	G.C.	DAI ROVAL	SIGN TEXT 60"	SATIN S.S. FINISH
7	TOILET SEAT COVER DISP. (SJR, MTD)	G.C.	G.C.	BOBRICK	#B-221	SATIN S.S. FINISH
8	GRAB BAR	G.C.	G.C.	BOBRICK	37" LONG #R6800K4	SATIN S.S. FINISH
9	GRAB BAR	G.C.	G.C.	BOBRICK	42" LONG #R6800K4	SATIN S.S. FINISH

1. FLUSH CONTROLS SHALL REMAIN OPERABLE OR ALTERNATE AND SHALL CONTAIN VENTILATION OR ACCESSORY COSE HANDLES.
2. FLUSH CONTROLS OPERATING MECHANISMS SHALL BE OPERABLE WITH ONE HAND AND SHALL NOT REQUIRE TIGHT GRIPPING OR PINCHING OR TWISTING OF THE WRIST. THE FORCE REQUIRED TO ACTIVATE CONTROLS SHALL BE NO GREATER THAN 5 LBS.
3. FLUSH CONTROL HEIGHTS SHALL BE 48" MAX. AFF. FOR AGES 5-4, 49" MAX. AFF. FOR AGES 5-4, 49" MAX. AFF. FOR AGES 5-4, 49" MAX. AFF. FOR AGES 5-4.
4. WATER CLOSERS SHALL HAVE A HEIGHT OF 11" TO 12" AFF. FOR RESTROOMS.
5. WATER CLOSERS SHALL HAVE A HEIGHT OF 17" TO 18" AFF. IN RESTROOMS.
6. WATER CLOSERS SHALL HAVE A CENTRULINE OF 17" TO 19" AFF. IN ADULT RESTROOMS AND THE LUNCH ROOM RESTROOM.
7. WATER CLOSERS SHALL HAVE A CENTRULINE OF 12" IN RESTROOMS.
8. WATER CLOSERS SHALL HAVE A CENTRULINE OF 18" IN ADULT RESTROOMS AND THE LUNCH ROOM RESTROOM.
9. WATER CLOSERS SHALL HAVE A CENTRULINE OF 18" IN ADULT RESTROOMS AND THE LUNCH ROOM RESTROOM.
10. GRAB BAR HEIGHTS SHALL BE 40" TO 42" AFF. TO CENTRULINE IN RESTROOMS.
11. GRAB BAR HEIGHTS SHALL BE 40" TO 42" AFF. TO CENTRULINE IN ADULT RESTROOMS AND THE LUNCH ROOM RESTROOM.
12. GRAB BAR HEIGHTS SHALL BE 40" TO 42" AFF. TO CENTRULINE IN ADULT RESTROOMS AND THE LUNCH ROOM RESTROOM.



BOYS RESTROOM ELEVATIONS SCALE: 3/8" = 1'-0"

GIRLS RESTROOM ELEVATIONS SCALE: 3/8" = 1'-0"

INTERIOR ELEVATIONS

DATE: 8-17-09

PROJECT No.: 29001

SHEET No.:



PROJECT LOCATION
3034 OLD ATANTA ROAD
CLAYTON, GA 30707

dennis J. dubey, architect

6327 Point Twenty Two
Gainesville, Georgia 30506
Phone: (678) 231-4050
E-Mail: dj@darch@bellsouth.net

NOT RELEASED FOR CONSTRUCTION

PROFESSIONAL SEAL