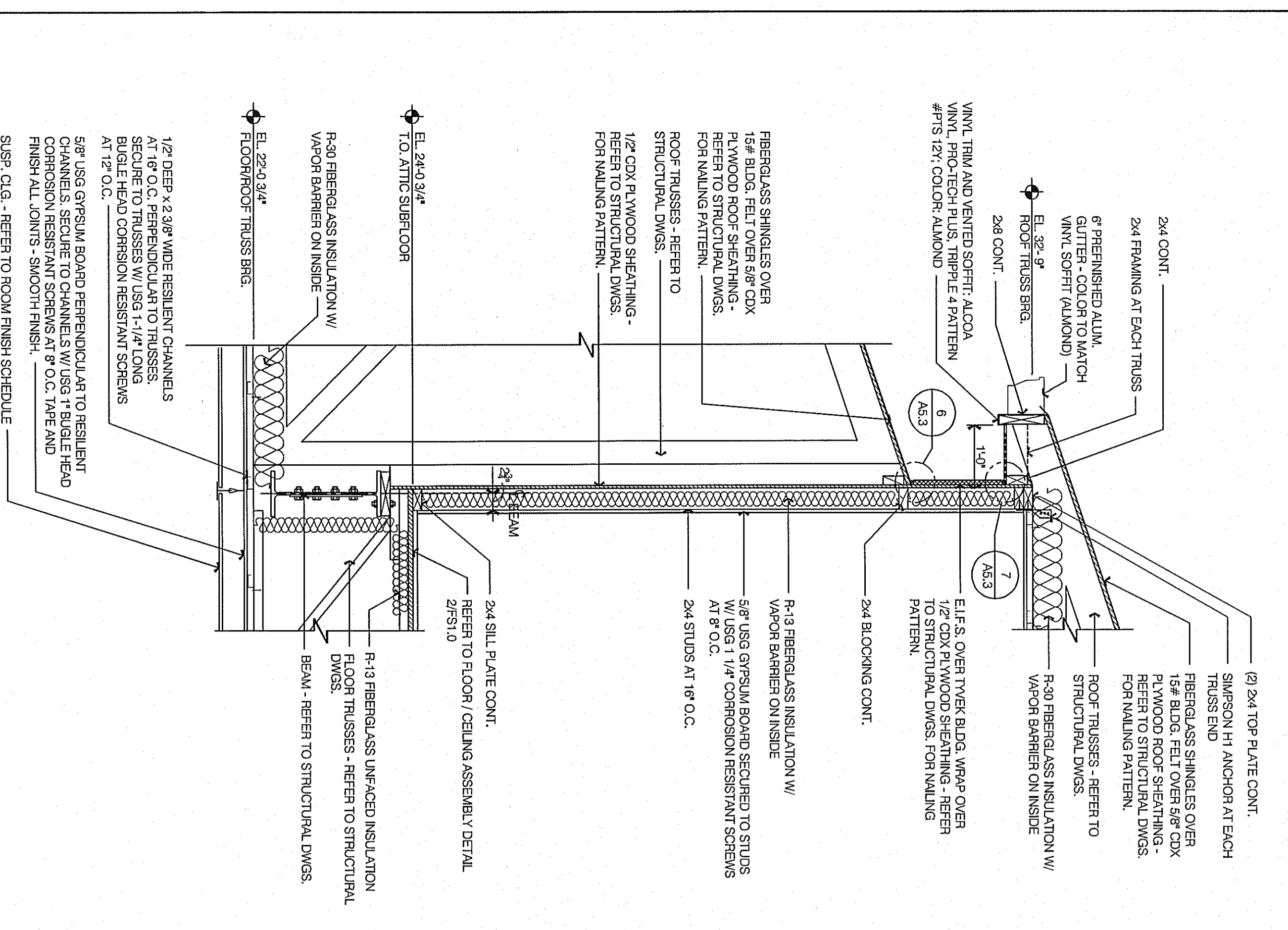
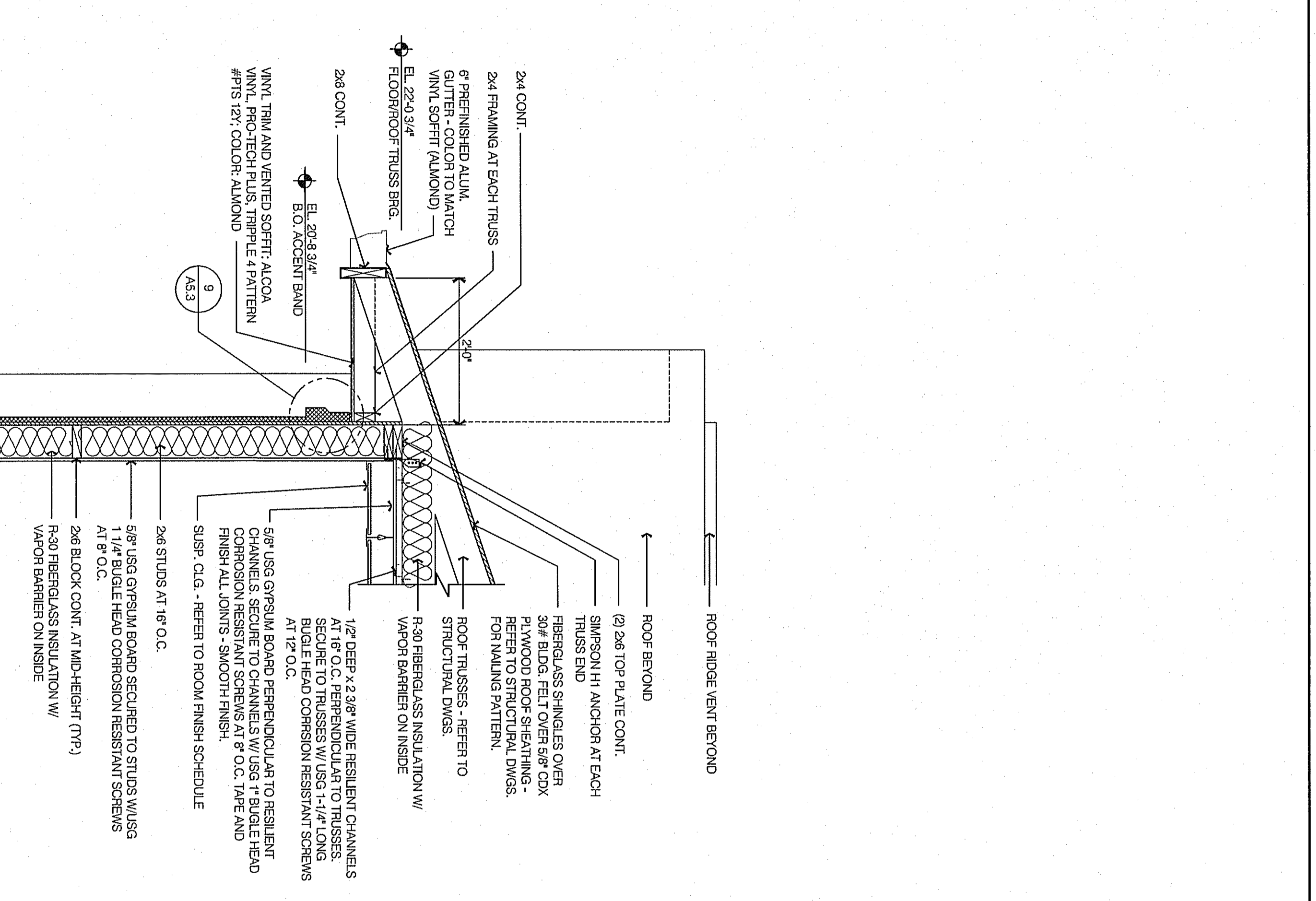


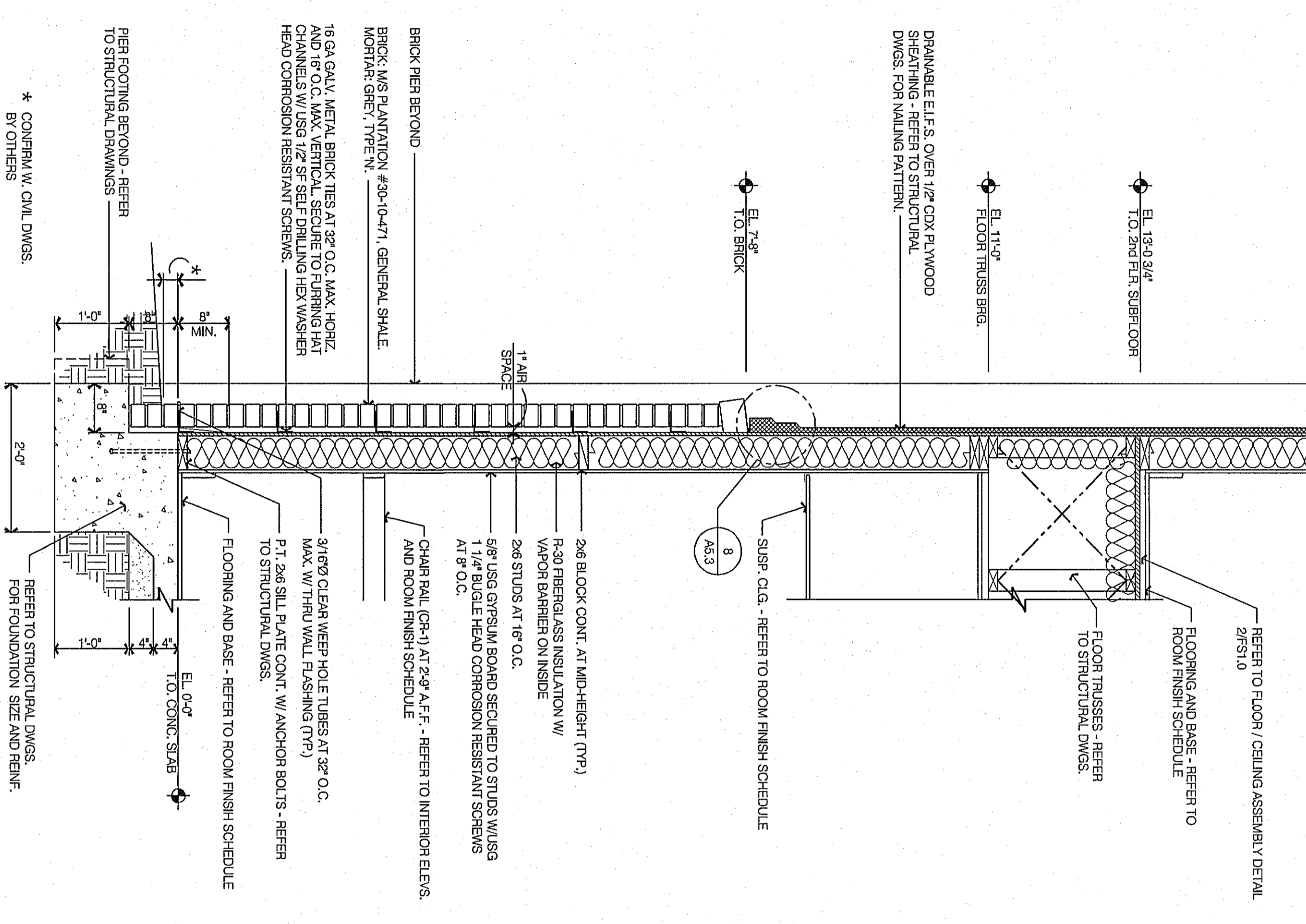
SECTION 5 SCALE: 3/4" = 1'-0"



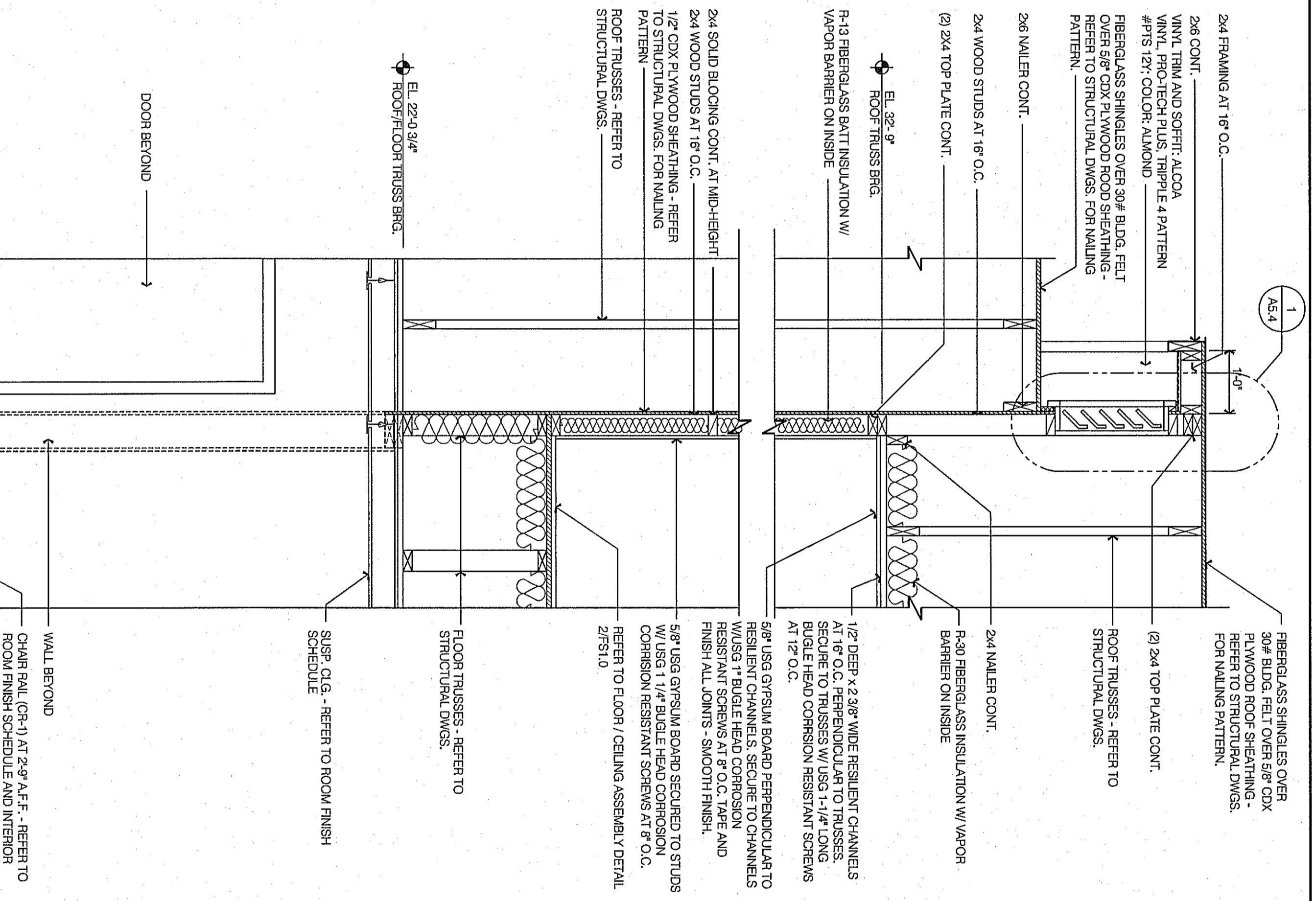
SECTION 4 SCALE: 3/4" = 1'-0"



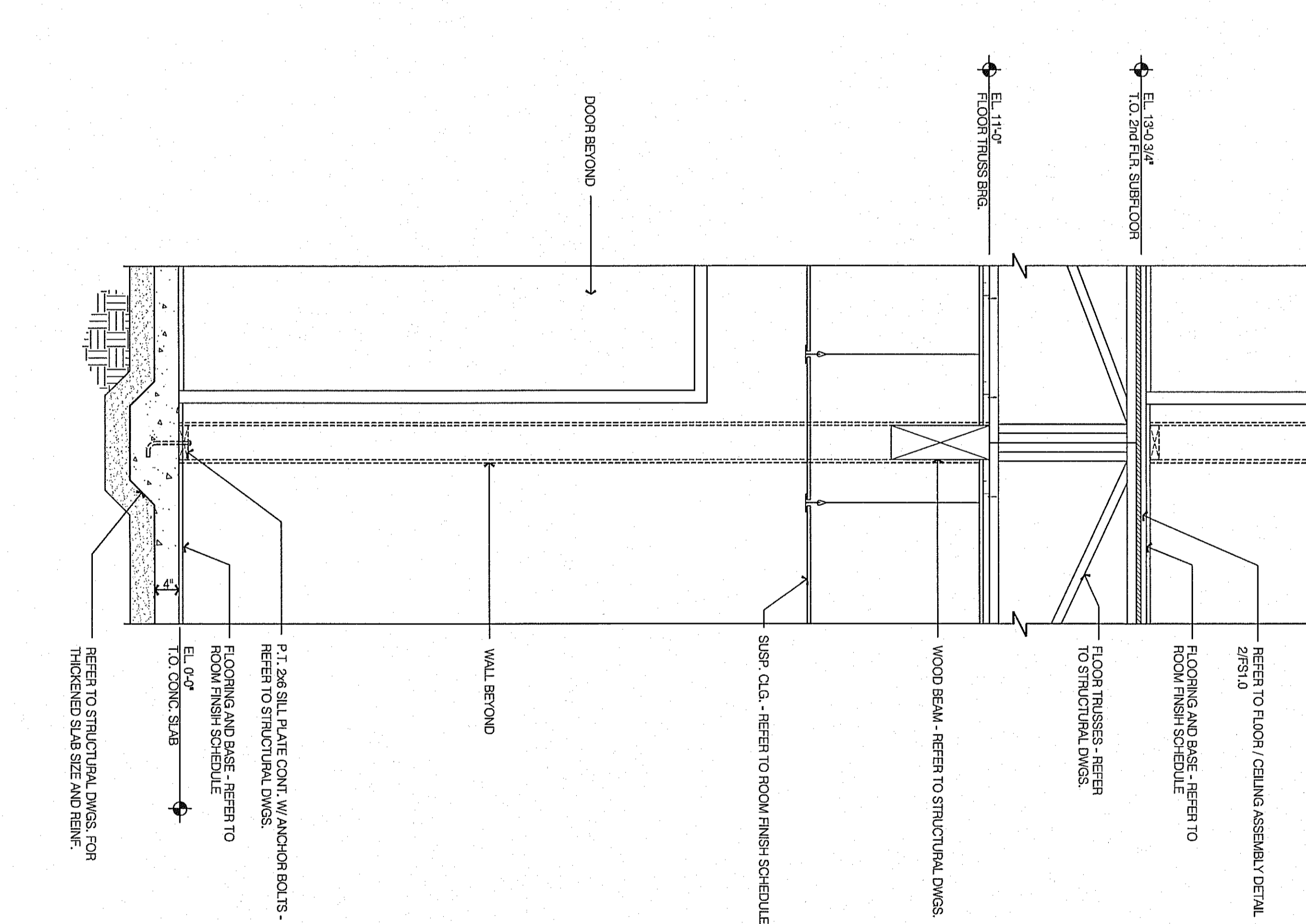
SECTION 3 SCALE: 3/4" = 1'-0"



SECTION 2 SCALE: 3/4" = 1'-0"



SECTION 1 SCALE: 3/4" = 1'-0"



SECTION 1 SCALE: 3/4" = 1'-0"

dennis j. dubey, architect
 6327 Point Twenty Two
 Gainesville, Georgia 30506
 Phone (678) 231-4050
 E-Mail: dj@darch@bellsouth.net

THIS DOCUMENT IS THE PROPERTY OF DENNIS J. DUBEY ARCHITECT AND IS NOT TO BE REPRODUCED OR TRANSMITTED IN ANY FORM OR BY ANY MEANS, ELECTRONIC OR MECHANICAL, INCLUDING PHOTOCOPYING, RECORDING, OR BY ANY INFORMATION STORAGE AND RETRIEVAL SYSTEM. ANY UNAUTHORIZED REPRODUCTION OR TRANSMISSION OF THIS DOCUMENT IS STRICTLY PROHIBITED. THE USER AGREES TO HOLD DENNIS J. DUBEY ARCHITECT HARMLESS FROM AND AGAINST ALL CLAIMS, DAMAGES, LOSSES AND EXPENSES, INCLUDING REASONABLE ATTORNEY'S FEES, ARISING OUT OF OR RESULTING FROM THE USE OF THIS DOCUMENT.

NOT RELEASED FOR CONSTRUCTION

PROFESSIONAL SEAL

PROJECT LOCATION
 3054 D.D. ATANTA ROAD
 CLAYTON, GA 30511



REVISIONS

SECTIONS AND DETAILS

AS.1

DATE: 8-17-09
 PROJECT No.: 29001
 SHEET No.: