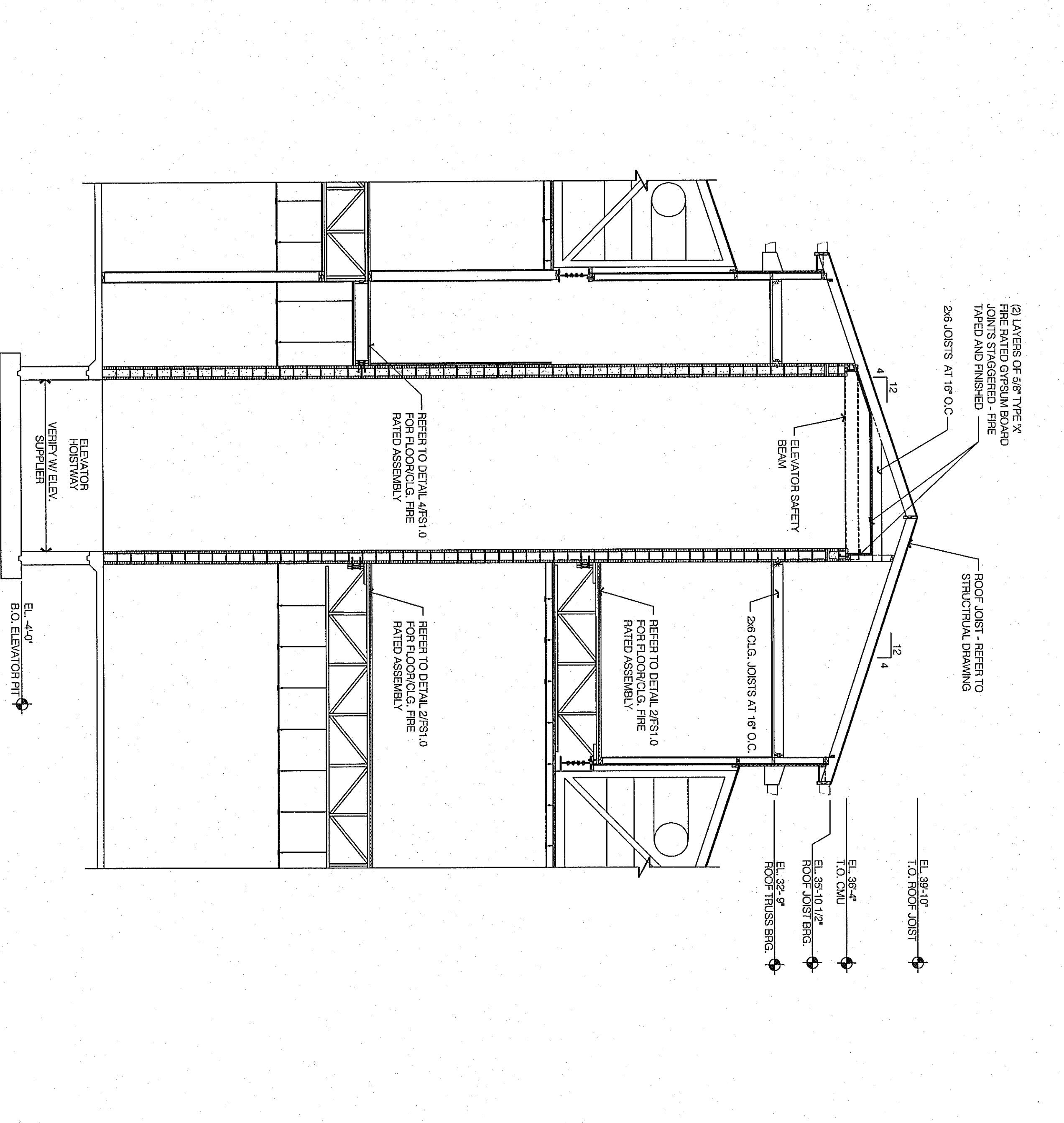
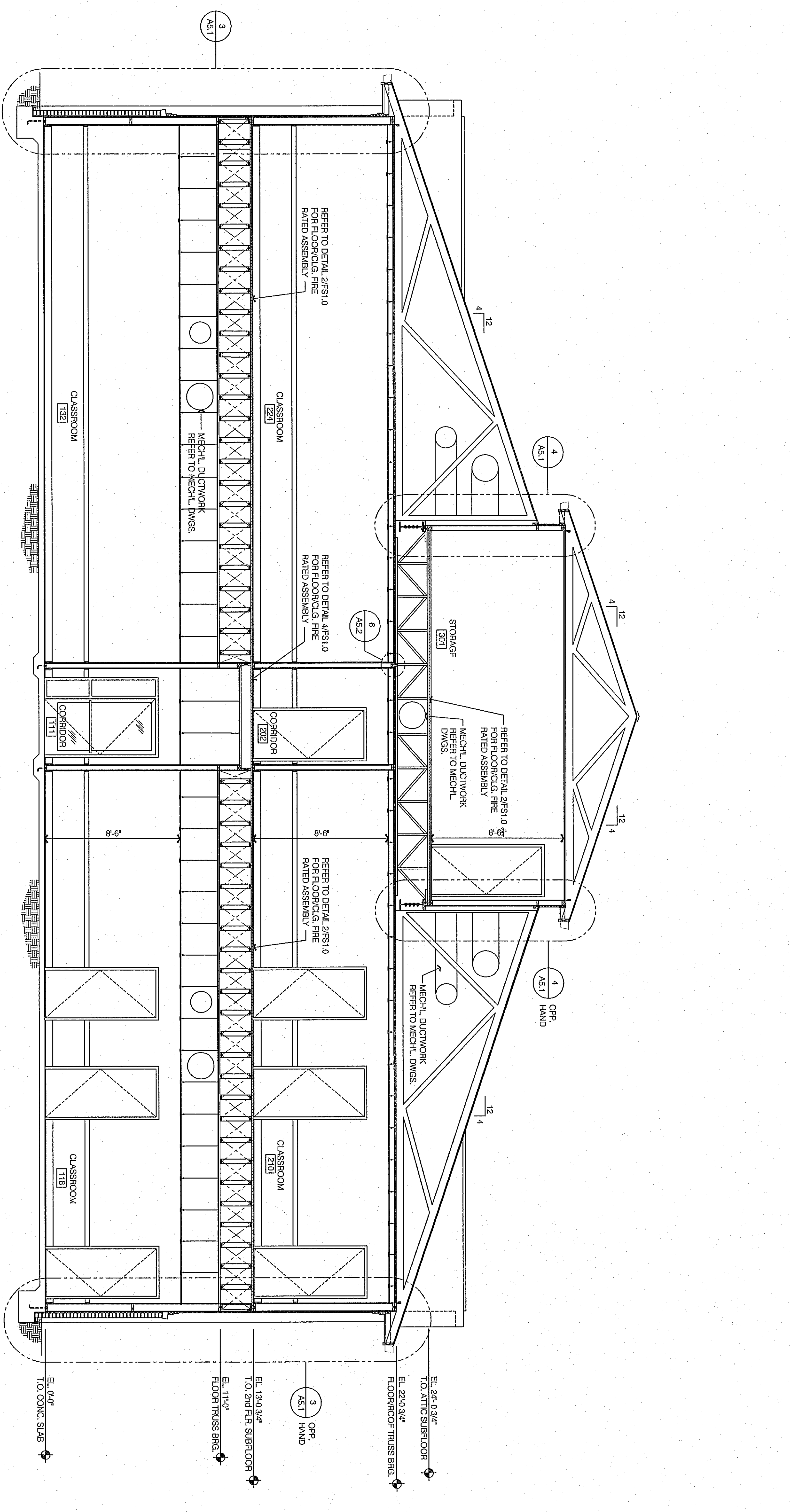


SECTION 1
SCALE: 1/4" = 1'-0"



SECTION 3
SCALE: 1/4" = 1'-0"



SECTION 2
SCALE: 1/4" = 1'-0"

dennis j. dubey, architect
6327 Point Twenty Two
Gainesville, Georgia 30506
Phone (678) 231-4050
E-Mail: djdarch@bellsouth.net

NOT RELEASED FOR CONSTRUCTION
PROFESSIONAL SEAL

PROJECT LOCATION
3824 OLD ATLANTA ROAD
CUMMINGS, GA 30041



REVISIONS

SECTIONS AND DETAILS

DATE PROJECT NO.
8-17-09 29001
SHEET NO.
A5.0