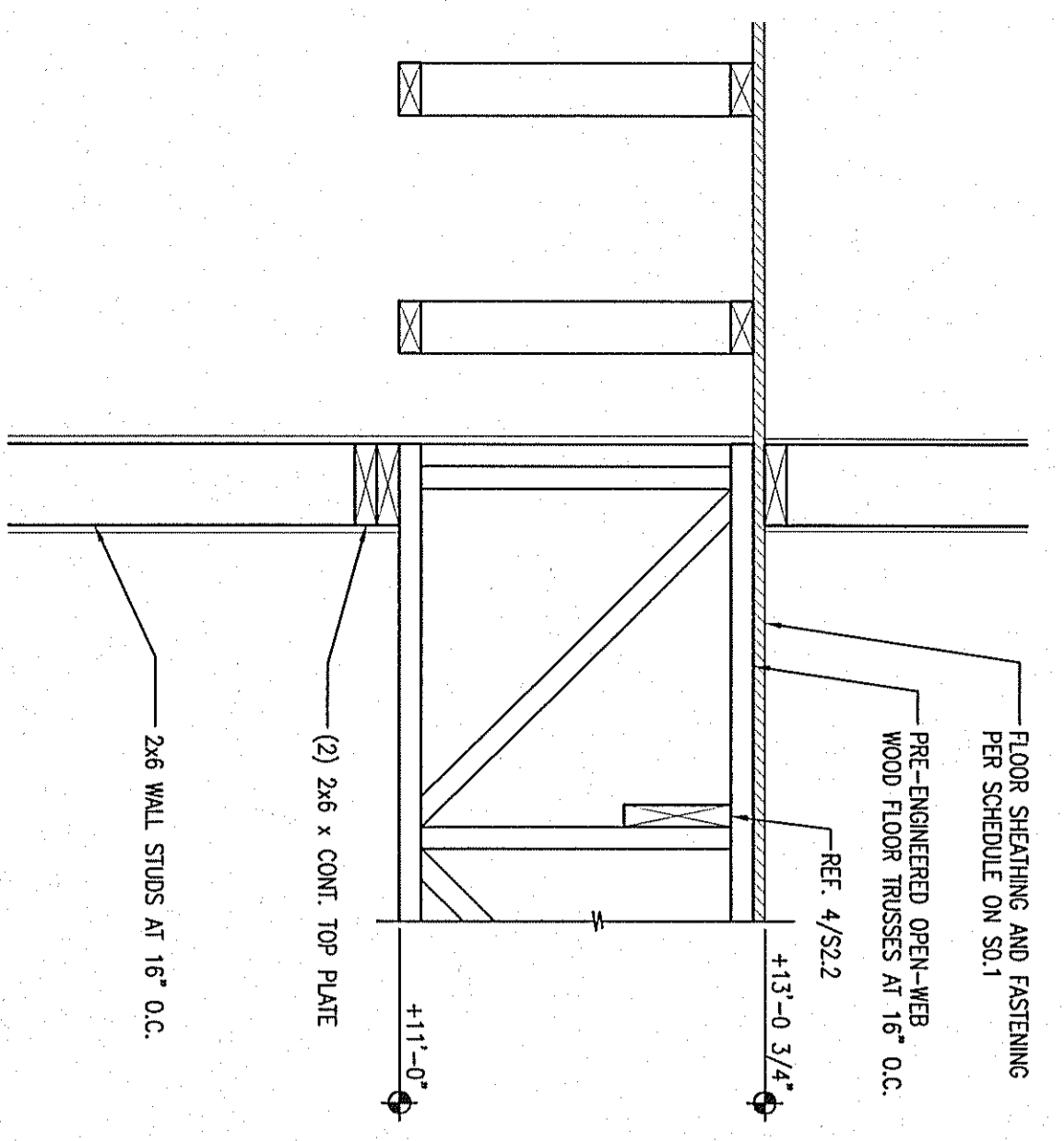


1 SECTION
SCALE: 1" = 1'-0"

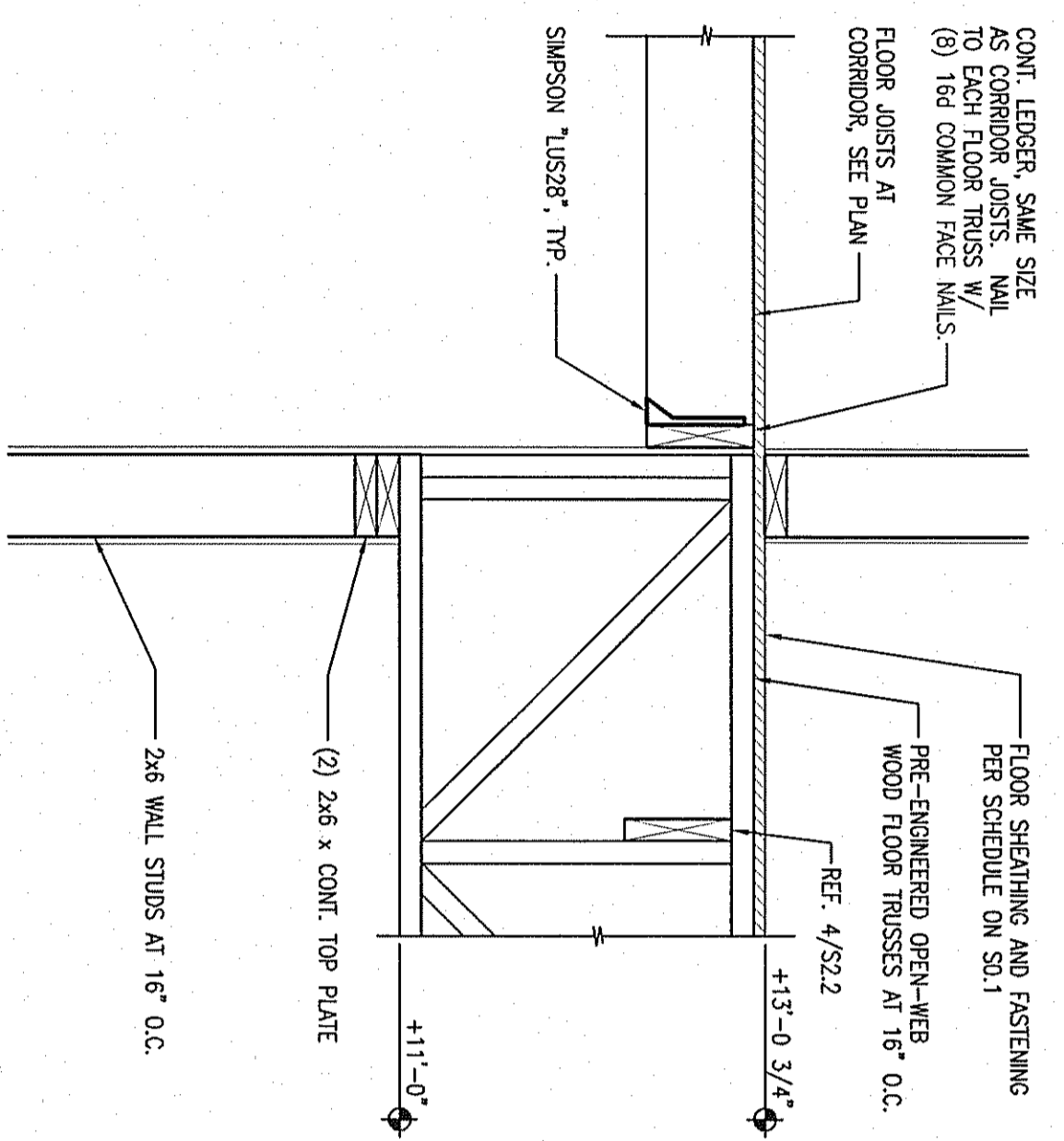
2 SECTION
SCALE: 1" = 1'-0"

3 SECTION
SCALE: 1" = 1'-0"

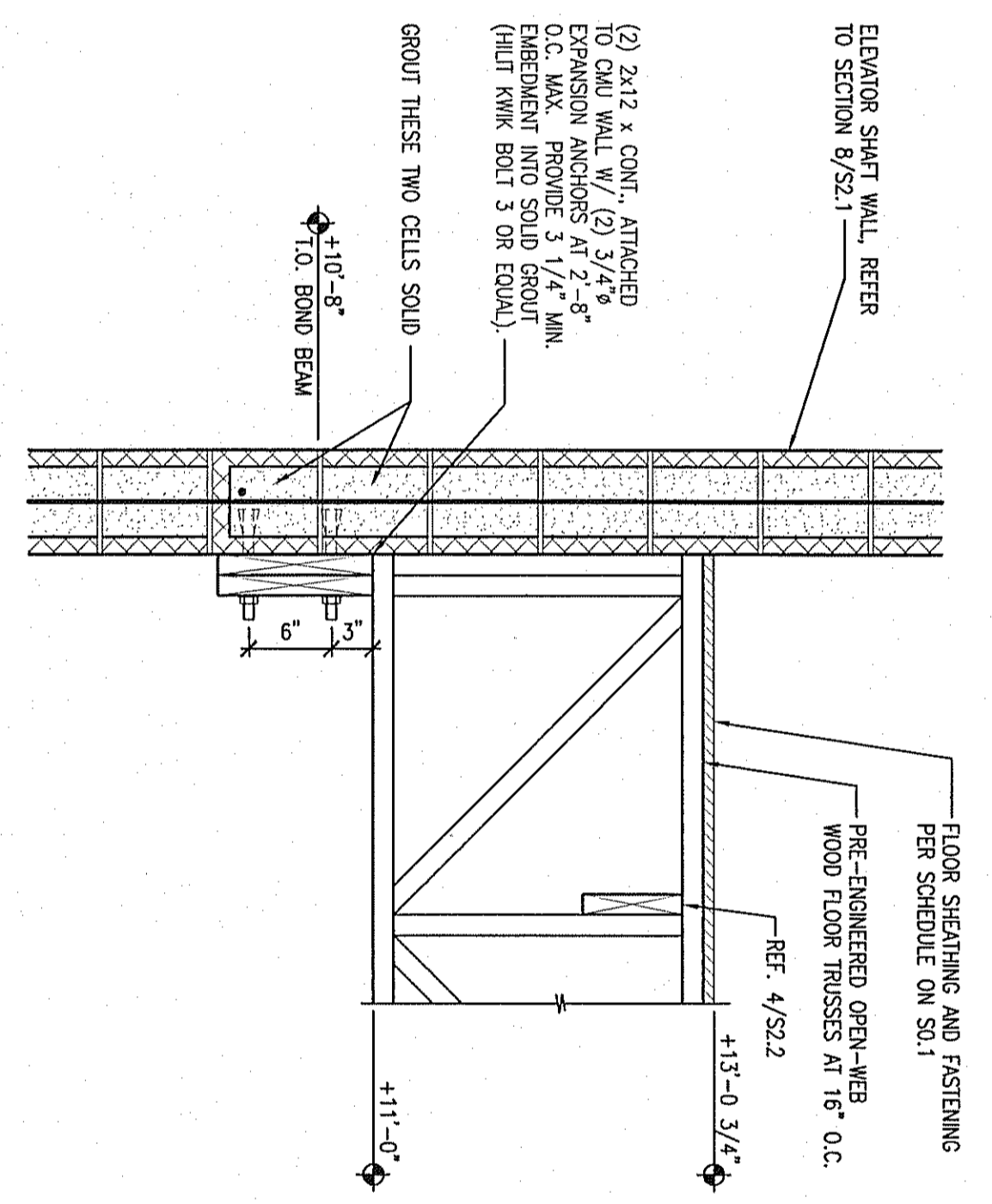
4 SECTION
SCALE: 1" = 1'-0"



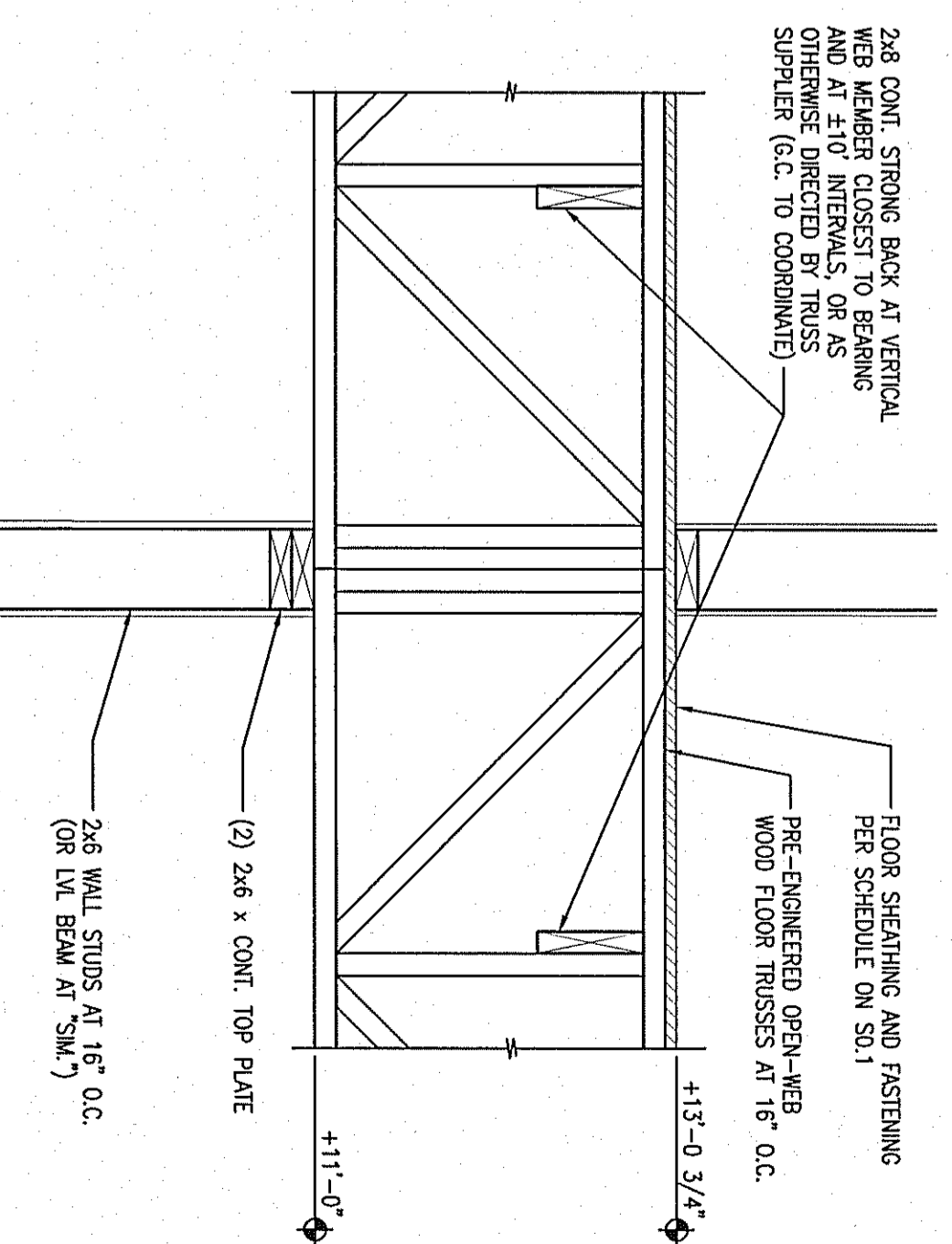
5 SECTION
SCALE: 1" = 1'-0"



6 SECTION
SCALE: 1" = 1'-0"



7 SECTION
SCALE: 1" = 1'-0"



8 SECTION
SCALE: 1" = 1'-0"

dennis j. dubey, architect
6327 Point Twenty Two
Columbus, Georgia 31906
Phone: (678) 231-4020
E-Mail: ddjrch@bellsouth.net

THIS DOCUMENT IS THE PROPERTY OF DENNIS J. DUBEY, ARCHITECT AND IS LOANED TO YOU FOR YOUR PROJECT. IT IS NOT TO BE REPRODUCED OR TRANSMITTED IN ANY FORM OR BY ANY MEANS, ELECTRONIC OR MECHANICAL, INCLUDING PHOTOCOPYING, RECORDING, OR BY ANY INFORMATION STORAGE AND RETRIEVAL SYSTEM. WITHOUT THE WRITTEN PERMISSION OF DENNIS J. DUBEY, ARCHITECT, THIS DOCUMENT IS NOT TO BE REPRODUCED OR TRANSMITTED IN ANY FORM OR BY ANY MEANS, ELECTRONIC OR MECHANICAL, INCLUDING PHOTOCOPYING, RECORDING, OR BY ANY INFORMATION STORAGE AND RETRIEVAL SYSTEM.

NOT RELEASED FOR CONSTRUCTION

PROFESSIONAL SEAL

PROJECT LOCATION
800 OLD MONTGOMERY
COLUMBUS, GA 31906

MONTESSORI SCHOOL

REVISIONS

FLOOR FRAMING DETAILS

DATE PROJECT No.
7-15-09 29001

SHEET No.
S2.2

PROGRESS SET - NOT FOR CONSTRUCTION

Bowman Engineering, Inc.
3939 Old Flowerly Branch Road
Oakwood, GA 30566
Phone: (770) 297-0075
Fax: (770) 297-0078