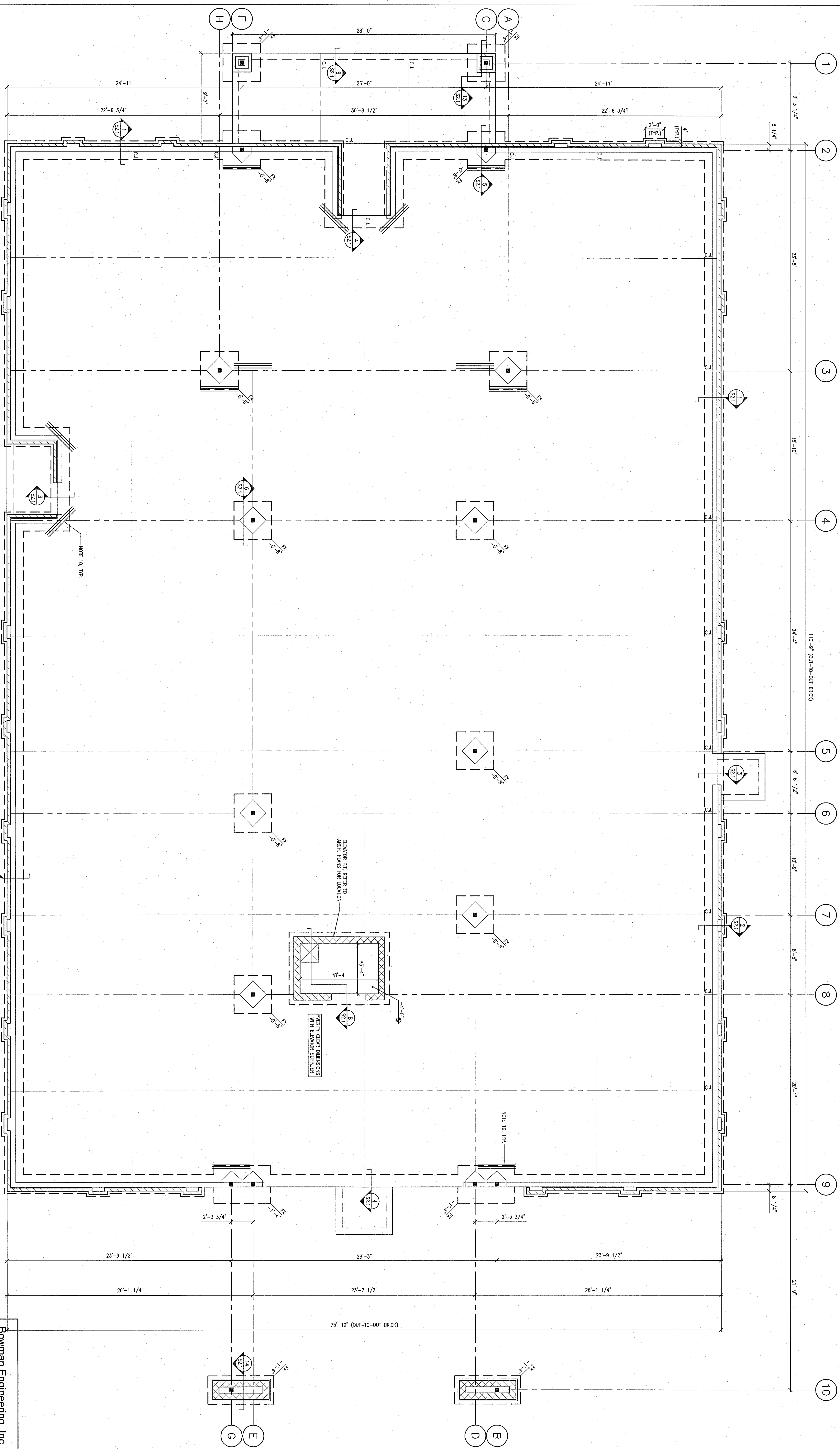


FOOTING SCHEDULE		
MARK	FOOTING SIZE (L x W x D)	FOOTING REINFORCING
F4	4'-0" x 4'-0" x 1'-0"	(4) #5 BARS EA. W/ TOP & BOTTOM
F4A	4'-0" x 4'-0" x 1'-0"	(4) #5 BARS EA. W/ TOP & BOTTOM

- FOUNDATION PLAN NOTES:**
- SEE SHEET S1.0 FOR GENERAL NOTES.
  - FOOTING SHALL BE 4" THICK CONCRETE. UNLESS OTHERWISE INDICATED IN GEOTECHNICAL REPORT (IF AVAILABLE), UNLESS OTHERWISE NOTED, CONCRETE SHALL BE 4000 PSI. FLOOR SLABS SHALL BE 4" THICK SLAB-ON-GROUND, REINFORCED W/ POLYPROPYLENE FIBERGLASS REINFORCED FIBERS AT A DOSAGE RATE OF 1.5 POUNDS PER CUBIC YARD (PPF) FROM BENCH MARK OR APPROX ELEV. FROM THE DEVELOPER'S RECOMMENDATIONS FOR MONS AND FINISHES. PROVIDE A 10 MIL WATER RESISTANT BARRIER ALL INTERIOR WALLS. EXTERIOR WALLS MAY BE CONSTRUCTED BY S&B METHOD. 1/2" x 2" STRIPS TO BE SPACED 18" ON S&B AND 24" ON OTHER METHODS.
  - PROVIDE NEW FROWEL BARRIERS FOR CONCRETE FINISHING OF FLOOR SLABS.
  - JOINT FILLER SHALL BE PLACED IN CLEAN JOINTS, OVERLAPPED, AND SHAVED FLUSH.
  - SEE SPECIFICATIONS AND/OR ARCHITECTURAL DRAWINGS FOR FLOOR SLAB FINISHES.
  - C.I. = SLAB CONTRACTION OR CONSTRUCTION JOINT. SEE DETAILS ON SHEET S2.1 FOR APPROPRIATE JOINT CONSTRUCTION.
  - INTERIOR SLAB JOINTS SHALL BE AT A MAXIMUM CENTER SPACING OF 20 FEET. EXTERIOR SLAB JOINTS SHALL BE AT A MAXIMUM CENTER SPACING OF 15 FEET.
  - ALL ELEVATIONS ARE RELATIVE TO A FINISHED FLOOR ELEVATION OF 0'-0" (REFERENCE ONLY). REFER TO CIVIL PLANS FOR ACTUAL ELEVATIONS.
  - CONTRIBUTION TO PREPARE SURFACE FOR BUILDING AND PER GEOTECHNICAL ENGINEER'S REPORT AND RECOMMENDATIONS.
  - PROVIDE (3) #4 x 4'-0" AT ALL SLAB RE-entrant CORNERS AND WHERE CONTRACTION OF CONSTRUCTION JOINTS ARE DISCONTINUOUS. REFER TO DETAIL 12/22.1 FOR REINFORCING DETAILS.
  - THICKS INDICATES LOCATION OF SWISSAN HOLDING WITH "SESTRE" ANCHOR BOLT. PROVIDE DOUBLE 3/8" STUDS CONTINUOUS FROM FLOOR TO ROOF WITH SOLID BRACING AT THE FLOOR CEILING, AND ANCHOR BOLT TIES TO CONNECT THE FIRST AND SECOND FLOOR DOUBLE 3/8" STUDS.



**dennis j. dubey, architect**  
 6327 Point Twenty Two  
 Gainesville, Georgia 30506  
 Phone (770) 231-4050  
 E-Mail: ddjarch@bellsouth.net

THIS DOCUMENT IS THE PROPERTY OF DENNIS J. DUBEY ARCHITECT AND IS NOT TO BE REPRODUCED OR TRANSMITTED IN ANY FORM OR BY ANY MEANS, ELECTRONIC OR MECHANICAL, INCLUDING PHOTOCOPYING, RECORDING, OR BY ANY INFORMATION STORAGE AND RETRIEVAL SYSTEM. WITHOUT THE WRITTEN PERMISSION OF DENNIS J. DUBEY ARCHITECT, THIS DOCUMENT IS NOT TO BE REPRODUCED OR TRANSMITTED IN ANY FORM OR BY ANY MEANS, ELECTRONIC OR MECHANICAL, INCLUDING PHOTOCOPYING, RECORDING, OR BY ANY INFORMATION STORAGE AND RETRIEVAL SYSTEM.

**NOT RELEASED FOR CONSTRUCTION**

**PROFESSIONAL SEAL**

**PROJECT LOCATION**  
 3634 OLD ATLANTA ROAD  
 CUMMINGS, GA 30621

**MONTESSORI SCHOOL**

**REVISIONS**

**FOUNDATION PLAN**

**DATE** 7-15-09  
**PROJECT No.** 29001

**SHEET No.** S1.0

**PROGRESS SET - NOT FOR CONSTRUCTION**

**FOUNDATION PLAN**  
 SCALE 1/4" = 1'-0"

**Bowman Engineering, Inc.**  
 3639 Old Flowering Branch Road  
 Oakwood, GA 30566  
 Phone: (770) 297-0075  
 Fax: (770) 297-0078